

# Sprint to market.

*DWF outperforms all the other available formats so drastically that there's hardly a comparison between them.*

— Chas Thompson  
Senior AutoCAD Support Engineer  
Siemens Logistics and Assembly  
Systems

Accelerate manufacturing projects with Autodesk® Design Review software (formerly Autodesk® DWF™ Composer), the all-digital way to review, mark up, and track changes to 2D and 3D designs—all without the original creation software. Accurately measure, redline, and mark up DWF™, DXF™, AutoCAD® DWG, Autodesk Inventor®, and raster formats. Communicate changes in the context of the design. Add comments, track status, and drag information of any type—product specifications, change orders, or estimates—combining them into a single file. Then round-trip the DWF file to any Autodesk® design application, overlaying digital markups onto the original computer-aided design (CAD) file for fast revisions. Add DWF support for assembly instructions and bill of materials (BOM) viewing in Autodesk Inventor® 11 DWF™ Extension, AutoCAD® Electrical, and AutoCAD® Mechanical, and a wide array of publishing options, and there's simply no better way to work.

See how Autodesk Design Review is the perfect solution for manufacturing:

#### **Get Reviews Done on Time**

Connect customer, supplier, planner, and purchasing sooner and shorten the product development lifecycle with faster, more accurate design reviews.

#### **Track Engineering Change Orders**

Autodesk Design Review automatically tracks comments and their status, helping to ensure that no information is lost.

#### **Accurately Communicate Design Information to the Entire Team**

Autodesk Design Review enables those unfamiliar with complex CAD software to fully visualize designs from Autodesk Inventor and AutoCAD-based applications. Manufacturing design data such as BOM information, assembly animations, finite element analysis (FEA) results, model representations, along with 2D and 3D measurement, can all be accessed in Design Review.

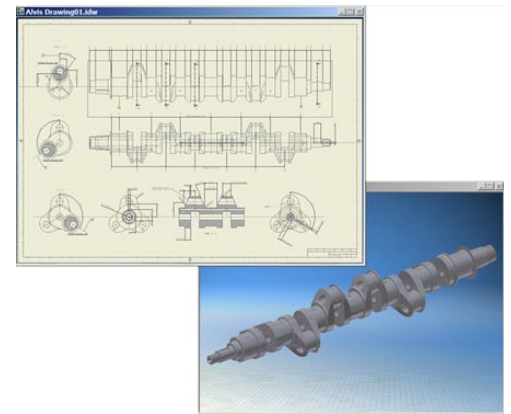
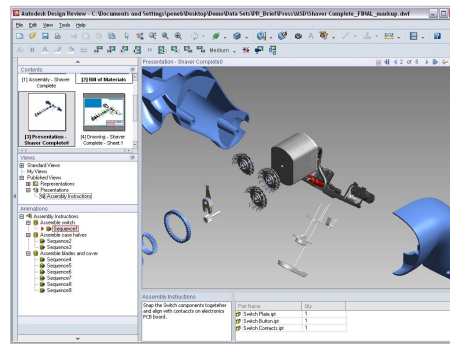
#### **Protect Your Intellectual Property**

Protect your IP by sharing DWF files, providing complete accuracy and fidelity without sending the original CAD file. Password protection and encryption offer additional security.

## Features and Benefits

### View

View and analyze 2D drawings and models exactly as the designer intended.

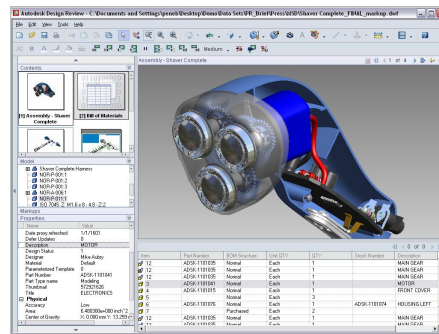


### NEW Assembly Instructions

Animated assembly instructions and exploded views of complex designs can greatly simplify the work of downstream users. Designers can publish technical documentation and assembly instructions to a DWF file that contains simplified views to help production and support teams assemble, maintain, and repair assemblies more effectively.

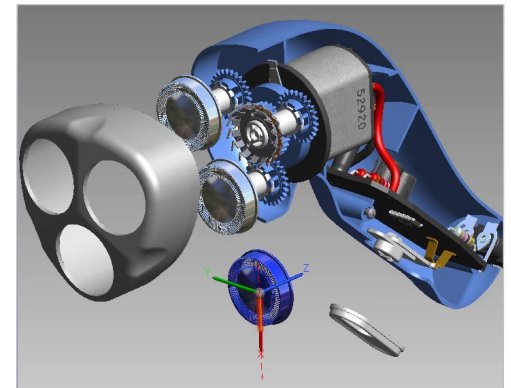
### NEW Autodesk Inventor Representations and Views

Use DWF to visualize 3D models created in Autodesk Inventor more efficiently, navigating directly to the specific views defined by the designer.



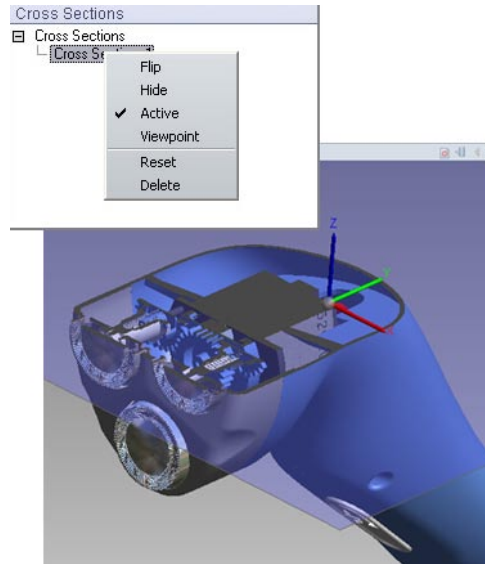
### NEW Autodesk Inventor Bill of Materials Support

Improve communication with suppliers and other departments by enabling secure review of designs and product definition data such as BOM information earlier in the process. Team members can review and mark up BOMs published from Autodesk Inventor software.

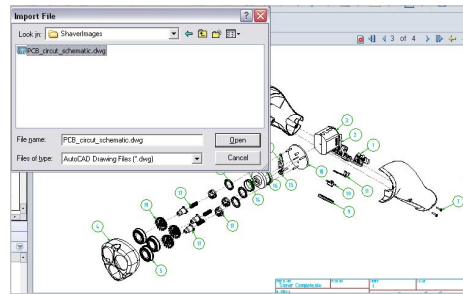


### NEW 3D Pull Apart

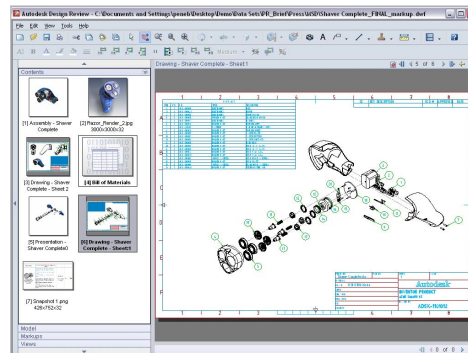
Reviewers of design information can deconstruct designs to gain access to specific parts for inspection. The ability to interactively pull 3D models apart and then return them to the original position means that team members can review designs faster and more effectively.



**NEW 3D Cross-Sectioning**  
Create section views of mechanical or machine designs to understand how the parts are assembled.



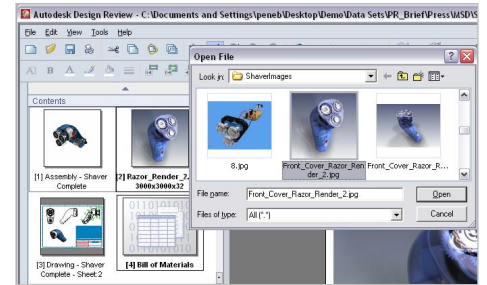
**NEW Import DWG and DXF Files**  
Import AutoCAD DWG and DXF files, including the latest 2007 format, directly into Design Review with full fidelity and accuracy.



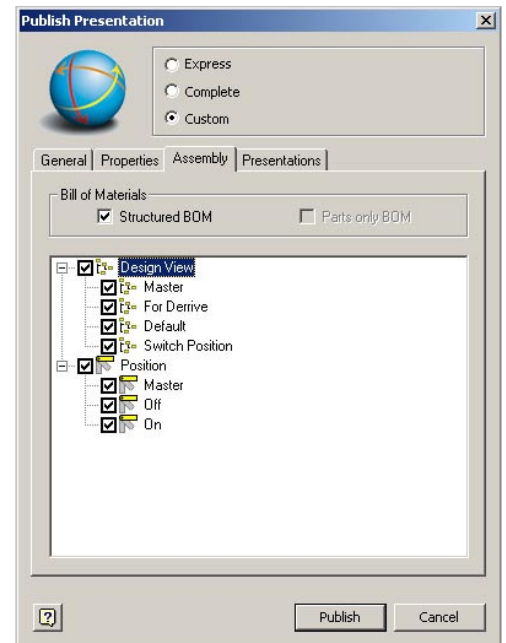
**ENHANCED Multisheet Viewing**  
View multisheet and 3D in one combined document. View complex sheet sets, including 3D models and 2D drawings, as a single, compact DWF file.



**NEW Create and Save Design Views**  
Collaborate more effectively by enabling designers and reviewers to share specific views of a model or drawing.

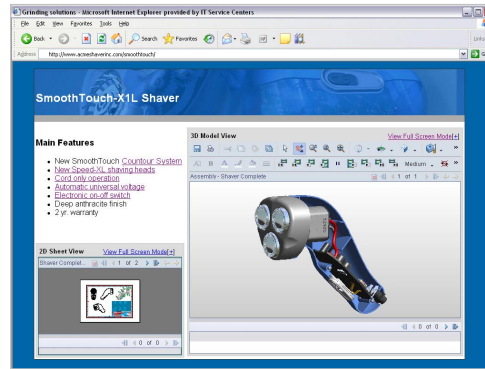


**ENHANCED Open and View Raster Files**  
Open, rotate, view, and mark up raster images, including BMP, CAL, CALS, CG4, FLC, FLI, FLIC, GIF, GP4, IG4, JFIF, JPE, JPEG, JPG, MIL, PCT, PCX, PICT, PNG, RLC, RST, TGA, TIF, and TIFF (including multisheet TIFF).



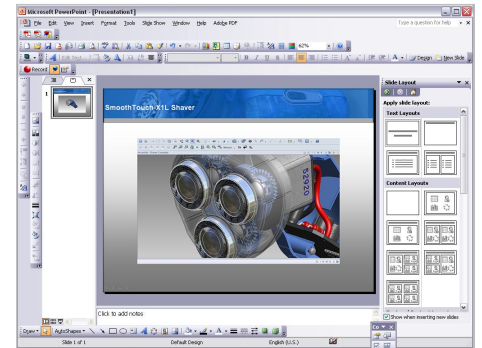
**ENHANCED Publish 3D DWF Files**  
AutoCAD and Autodesk Inventor applications can publish 3D DWF format files. Using Autodesk® DWF™ Writer, you can also easily publish 3D DWF files from other manufacturing software, including SolidWorks® 2006, Pro/ENGINEER® Wildfire 2.0, and CATIA®.

# AUTODESK® DESIGN REVIEW 2007



## Post on the Web

Easily communicate product information on the web by embedding Design Review or the free\* Autodesk® DWF™ Viewer in HTML.



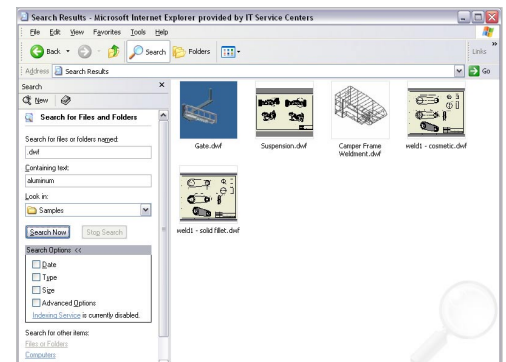
## Embed in Microsoft Office Applications

Drag your designs into Microsoft® Word, PowerPoint®, or Excel® programs, and enable team members to visualize the design in presentations, change orders, estimates, and more.



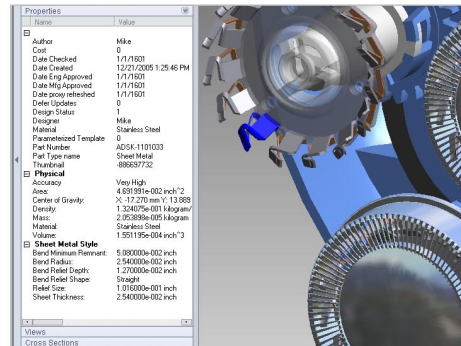
## Navigate Using Hyperlinks, Bookmarks, Views

Quickly navigate between sheets and views using embedded hyperlinks and bookmarks automatically published from Autodesk Inventor products or any AutoCAD-based design software.



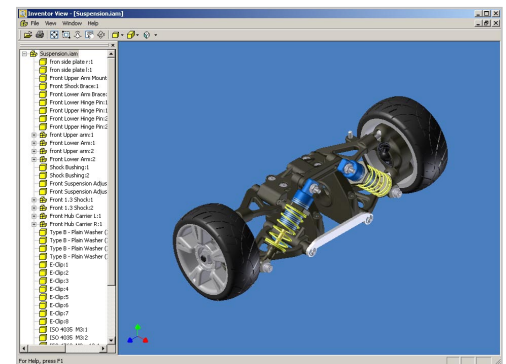
## Search in Microsoft Explorer

Find relevant data by searching in Microsoft Explorer using any text in the target DWF file.



## NEW Access Design Intelligence

Access data integral to engineering and design review, including model properties, object and markup properties, sheet set details, and drawing scale.

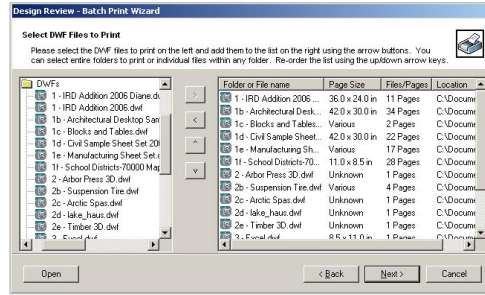


## Autodesk Inventor View

The Autodesk Design Review bundle includes Autodesk Inventor® View, which enables members of the extended manufacturing team to view and plot Autodesk Inventor files.

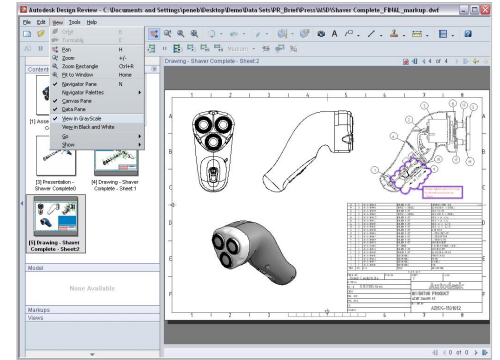
## Print

Rich printing options enable you to print with the same print fidelity as the CAD application.



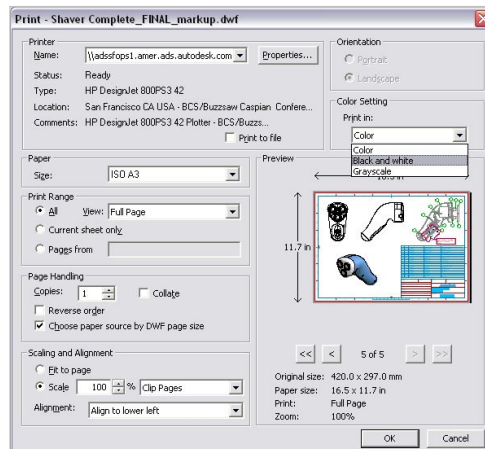
### NEW Batch Printing

Print multiple DWF files, customize print settings, and save batch printing configuration for later use with the Batch Print wizard. Automate batch printing with custom scripts, and save time by easily printing large numbers of DWF files overnight or as part of an automated process.



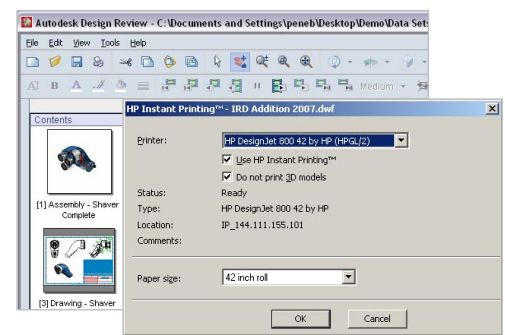
### NEW View and Print in Black and White or Grayscale

View or print color drawings and models as black and white or grayscale, providing more flexibility in printing and easier viewing of markups on drawings.



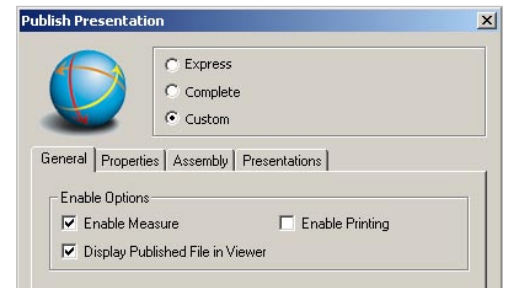
### Preview, Select Preferences, and Print

Preview files before printing, and print files to scale or at another scale with the same high fidelity as in Autodesk design software, including the printing of 3D designs. Other print options include fit to page, print current view, tile across multiple sheets, and print multiple pages or page ranges. Easily select paper sizes and preview the sheet or view to be printed before sending a DWF file to the printer.



### Printer Integration

Autodesk partnerships with HP, Océ, KIP, and PLP, among others, make printing to your hardware device easier than ever. If you're connected to a supported HP® Designjet® printer, select the HP Instant Printing feature to print an entire sheet set automatically rotated or scaled to best fit the printer roll size.

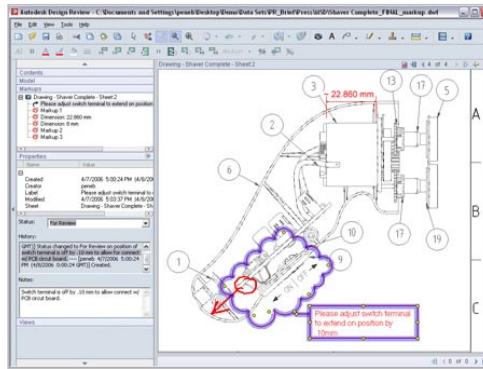


### FEATURE PREVIEW Disable Printing

To increase security when sharing designs, printing of the DWF file can be disabled in files published from Autodesk Inventor 11 DWF Extension.

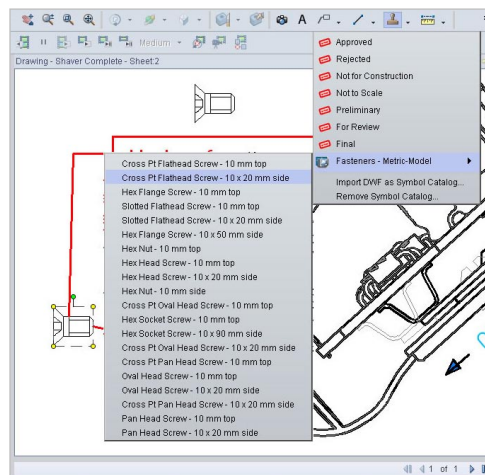
## Mark up and Annotate

Get everything needed for clear and concise review and markup, including redline, freehand, stamping, and custom symbols tools.



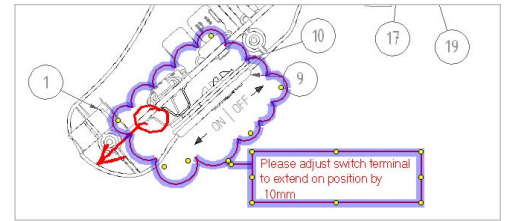
### ENHANCED 3D Review and Markup

The viewing and markup features of Autodesk Design Review include both 2D and 3D DWF files.



### ENHANCED Custom Stamps and Symbols

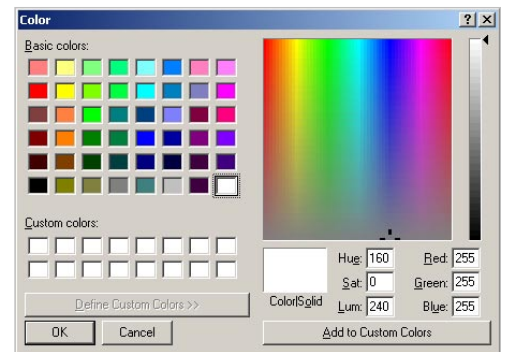
Custom symbols provide a powerful way to annotate and mark up information in the office or in the field. Create your own catalog of symbols from any source, including block libraries published to DWF format from AutoCAD software, as well as any DWF file published from Autodesk design applications or Autodesk DWF Writer. Reviewers and inspectors can now communicate precisely by resizing and rotating custom symbols, text, stamps, rectangles, and ellipses, providing greater flexibility and reuse when making annotations.



### ENHANCED Smart Shapes and Freehand

#### Markup Tools

Add comments to sheet sets and 3D views electronically, including familiar markup call-outs, standard shapes, freehand drawings, and text.

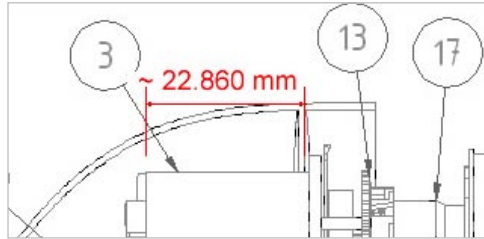


### Change Color, Line Width, and Font

Change the markup display according to different users or preferences. Select from the 48 pre-defined colors or one of your own, a full range of transparency options, and font sizes and styles.

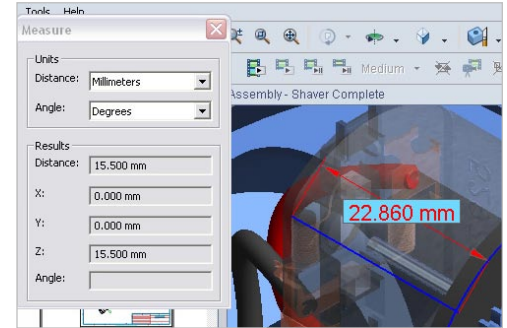
## Measure

Built-in measurement and dimension tools help to ensure accurate communication during design review.



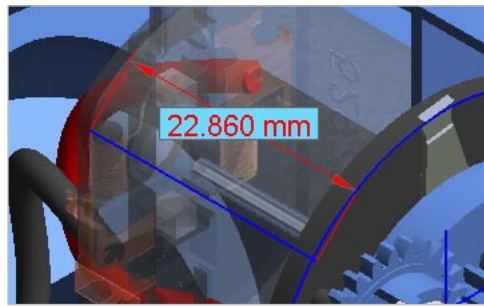
### Lines, Polylines, and Area Measurement

Use built-in measurement tools to precisely measure lines, polylines, and areas in drawings.



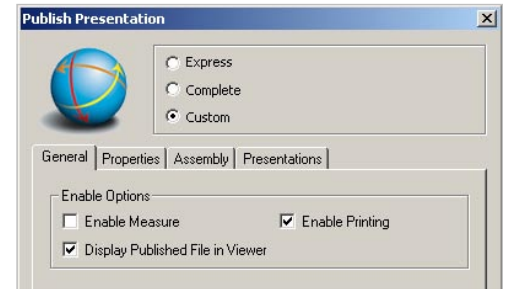
### Snap-to-Fit Geometry

Snap precisely to the drawing geometry, helping to ensure easy and accurate point-to-point measurement.



### 3D Measure

Use built-in measurement tools to measure distance and angles in 3D models.

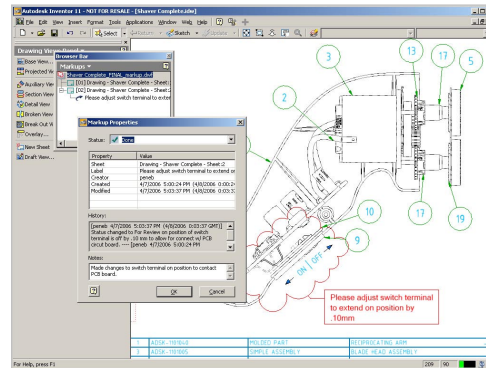


### FEATURE PREVIEW Disable Measurement

To increase security when sharing designs, the measurement feature can be disabled in files published from Autodesk Inventor 11 DWF Extension.

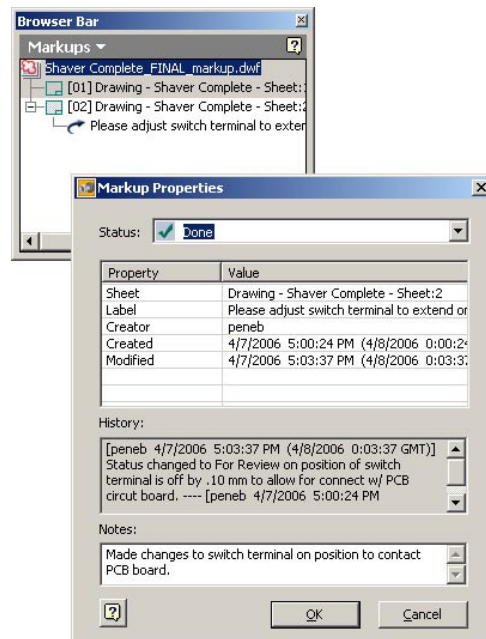
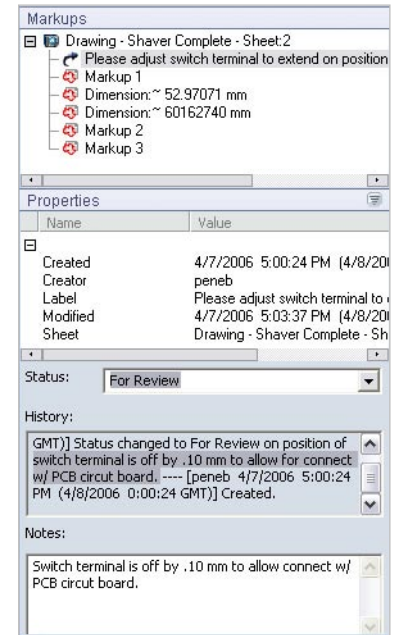
## Track Changes

Increasing team productivity is easy with powerful status tracking tools that help your team manage design or engineering change orders.



### ENHANCED Automatically Track All Markups

Automatically track changes and status with auto-recording of markups, text annotations, dimensions, review status, and notes.

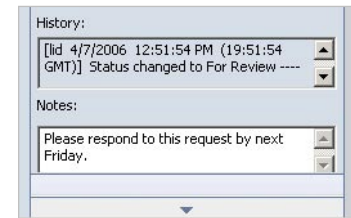


### Navigate Markups

Navigate markups using the markup browser to help ensure that all comments are addressed. Jump straight to markup views from the Navigator window, or track by status.

### Change Markup Status

Change the status of your reviews from a Question, to For Review, to Done. Design Review automatically changes the markup color to reflect markup status so you can quickly see design changes that require attention.



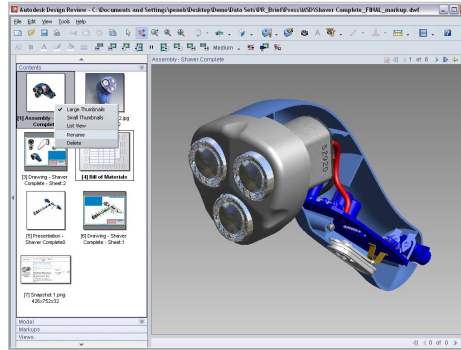
### Check History, Timestamps, and Notes

See input provided by the reviewer. All comments are directly associated with the design for more precise communication between team members. Add detailed notes, and track the history of comments throughout the review cycle in the Markup Properties window.



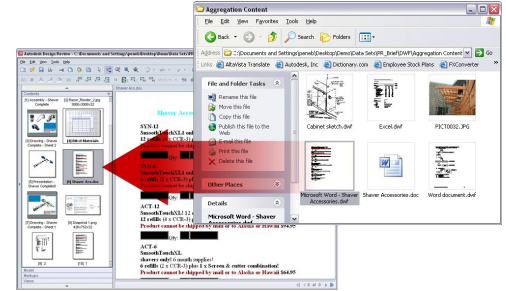
### Combine Project Documents

Drag project information into your DWF file to quickly and easily build a complete project file with product specifications, estimates, timelines, and more.




#### **NEW** Combine 2D and 3D Designs

Now you can share, review, and mark up both 2D drawings and 3D models in a single file. Design Review supports adding, deleting, reordering, and renaming sheets and models within the Navigator window.



#### Drag Project Data (from Microsoft Office and Others)

Drag project-related documents such as schedules or estimates published to DWF format as directly from Microsoft Office or other applications. Publishing to DWF format is simple with the free\* Autodesk DWF Writer, included with Design Review software.

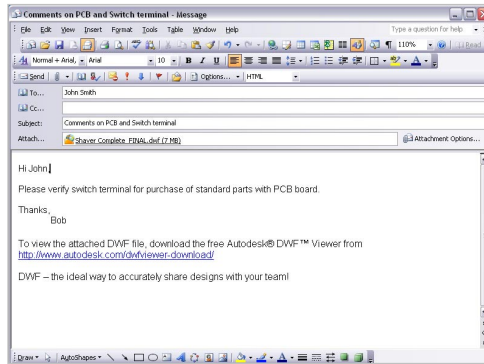
Item Number	Fits ALL <b>Smart Touch XL / Speed XL</b> models		
 Philips Shaver Heads HQ9 Smart Touch XL, Speed XL	Smart Touch XL / Speed XL razor models: 9190XL, 9170XL, 9170XLC, 9160XL, 8170XL, 8170XLC, 8160XLC, 8151XL, 8150XL, 8140XL and all "Smart TouchXL - Speed XL" model shavers  Smart Touch XL / Speed XL razor models: HQ9190CC, HQ9170, HQ9160, HQ9140, HQ9100, HQ9090, HQ9080, HQ9070, HQ9020, HQ8170, HQ8160, HQ8150, HQ8140, HQ8100 and all "Smart Touch XL - Speed XL" model shavers	US \$49.95  HQ9/3 Package of 3 heads	Qty: <input type="text"/> <input type="button" value="Buy"/>

#### Capture Graphical Information

Capture graphical information from the web or other applications with the Snapshot tool, and add it to your review set in Design Review.

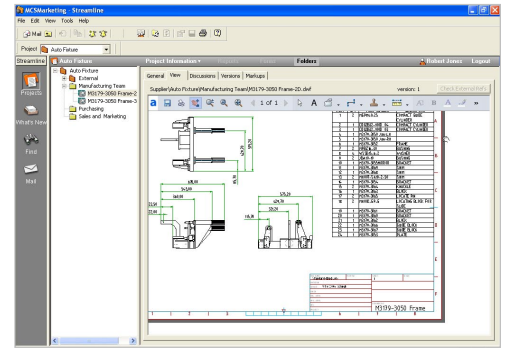
## Round-Trip Reviews

Increase team productivity with inline markup tools that enable you to round-trip designs quickly and easily back into Autodesk design software—without the need to reenter information.



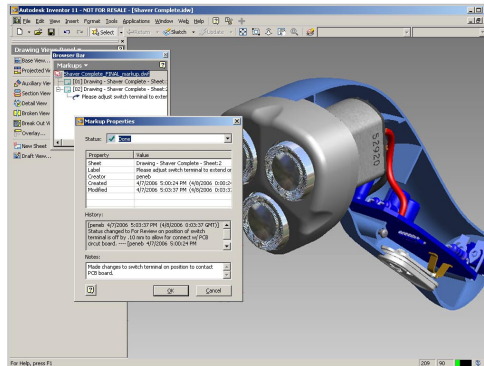
### ENHANCED Complete the Review Cycle

Save DWF files with markups, redlines, and annotations, and send them to the CAD user or other project team members. DWF preserves all markup information, which can be viewed in Autodesk design software or with the free\* Autodesk DWF Viewer.



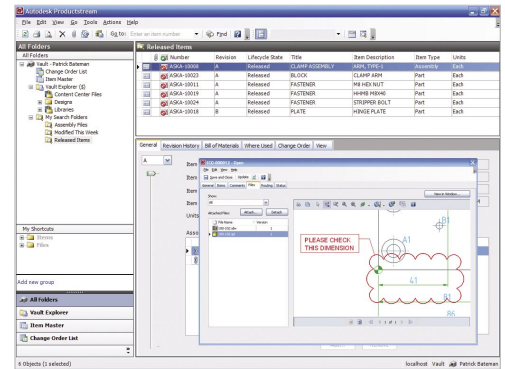
### Manage Markups in Autodesk Streamline

Autodesk Design Review is fully integrated with the Autodesk Streamline® on-demand collaborative project management solution, enabling the instant communication of changes to the project team and tracking of markup versions.



### NEW For Autodesk Inventor: Save and Round-Trip All Markups

Import 2D markups from DWF format back into Autodesk design software. Systematically walk through a review set, navigating markups in the Markup Set Manager for fast, easy revisions in AutoCAD, and now Autodesk Inventor 11 DWF Extension.



### Keep the Process Moving with Autodesk Productstream

Accelerate your engineering change order process with Autodesk Design Review software's measure and markup capabilities and the automated workflow of Autodesk® Productstream™ software. Easily communicate problems, track who did what and when, and manage markups with the relevant change order.

## You could get used to this.

The design is just the first step. It's what happens next that can make or break a product. Autodesk Design Review is the tool that helps you make your vision a reality in less time, and with less cost and effort. Never has your design review process been this efficient. Never has an idea been realized like this.

## Learn More or Purchase

To learn more or access the free trial for Autodesk Design Review software, visit [www.autodesk.com/designreview](http://www.autodesk.com/designreview).

To purchase Design Review go to [www.autodesk.com/designreview-buy](http://www.autodesk.com/designreview-buy).

\* This product is subject to the terms and conditions of the end-user license agreement that accompanies download of this software.