



Aplikace pro Revit doma i v zahraničí

Václav Statečný

- Zdroje aplikací
- Aplikace zdarma
- Komerční aplikace
- Knihovní prvky

- Export tabulek do Excelu (8)
- Přečíslování prvků (7)
- Prohlížeč (rodin/projektu) (6)
- Legendy prvků (6)
- Filtrování (5)
- Automatické kótování (4)
- L/P dveře (4)
- Krovky (2)



App Exchange

<http://apps.exchange.autodesk.com>

Autodesk Revit ▾

Search Exchange Apps Show All >

Welcome to the Autodesk Exchange for Autodesk® Revit®
Your portal to the Autodesk Revit software ecosystem, Autodesk Exchange provides access to Add-Ins that allow you to more efficiently author information-rich Building Information Models.

Featured Apps

 Family Manager... Hi-Tech Compan... ★★★★★ 0 Free	 ARCxl Details ... ARCxl, LLC ★★★★★ 0 Free	 BIMstop Revit ... Barrington Arc... ★★★★★ 0 Free
 WIIP Export Sc... WIIP ★★★★★ 1 USD 9.00	 DigiPara® Elev... DigiPara GmbH ★★★★★ 12 Free	

Quicklinks

Annotation Tools (15)	Construction (21)	Interoperability (16)	Plumbing Design (8)	Structural Analysis (3)
Architectural Design (28)	Content (20)	Landscape (1)	Productivity (2)	
Building Analysis (2)	Electrical Design (8)	Materials (7)	Productivity Tools (66)	
Building Performance Analysis (6)	Interior Design (1)	Mechanical Design (8)	Reality Capture (2)	

Autodesk

Home Technology Previews It's Alive in the Lab Discussion About

Autodesk®
// Labs_

AUTODESK REVIT USERS

- FABmep Import for Revit MEP**
Import FABmep models/projects into Revit MEP.
- Maximo Integration for Revit**
Extend BIM into Building Operations.
- Plugin of the Month**
See how easy it is to extend the functionality of design applications.
- Project Chronicle**
Capture, share, and learn from software workflows.
- Record: screen + voice + commands**
- Project Falcon wind tunnel simulation**
Experience fast, interactive air flow simulation.

<http://labs.autodesk.com/>

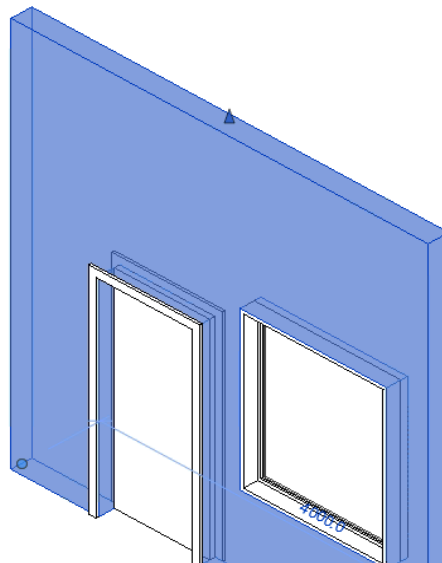
➤ Aktuálně 5

➤ Projekt Maximo

➤ Project Falcon

➤ Wall Opening Area

base extension distance	U.U.
Top Constraint	Up t...
Unconnected Height	4000.0
Top Offset	0.0
Top is Attached	<input type="checkbox"/>
Top Extension Distance	0.0
Room Bounding	<input checked="" type="checkbox"/>
Related to Mass	<input type="checkbox"/>
Structural	^
Structural	<input type="checkbox"/>
Enable Analytical Model	<input type="checkbox"/>
Structural Usage	Non...
Dimensions	^
Length	4000.0
Area	11.784 m ²
Volume	2.357 m ³
Identity Data	^
Comments	
Mark	
Phasing	^
Phase Created	New ...
Phase Demolished	None
Other	^
Opening Area Smaller Max	1.953 m ²
Opening Area	4.216 m ²



Autodesk

[Home](#)
[Technology Previews](#)
[It's Alive in the Lab](#)
[Discussion](#)
[About](#)

Autodesk®

// Labs_

AUTODESK REVIT USERS

FABmep Import for Revit MEP

Import FABmep models/projects into Revit MEP.

Maximo Integration for Revit

Extend BIM into Building Operations.

Plugin of the Month

See how easy it is to extend the functionality of design applications.

Project Chronicle

Capture, share, and learn from software workflows.

Project Falcon wind tunnel simulation

Experience fast, interactive air flow simulation.

Pro uživatele s předplatným - <http://subscription.autodesk.com>

57 aplikací

Modelování Nástroje Civil Structures

- Dřevěné rámové stěny
- Frame Generator
- Generátor modelů založený na aplikaci Excel
- Generátor osnov
- Rafter Framing
- Roof Trusses
- Structure Generator

Autodesk Subscription

Autodesk 360
Downloads
Download Your Product Software
Product Enhancements
Training
Contract Administration
Technical Support
Subscription Help

Product Enhancements

Download software enhancements and Autodesk 360 desktop clients.

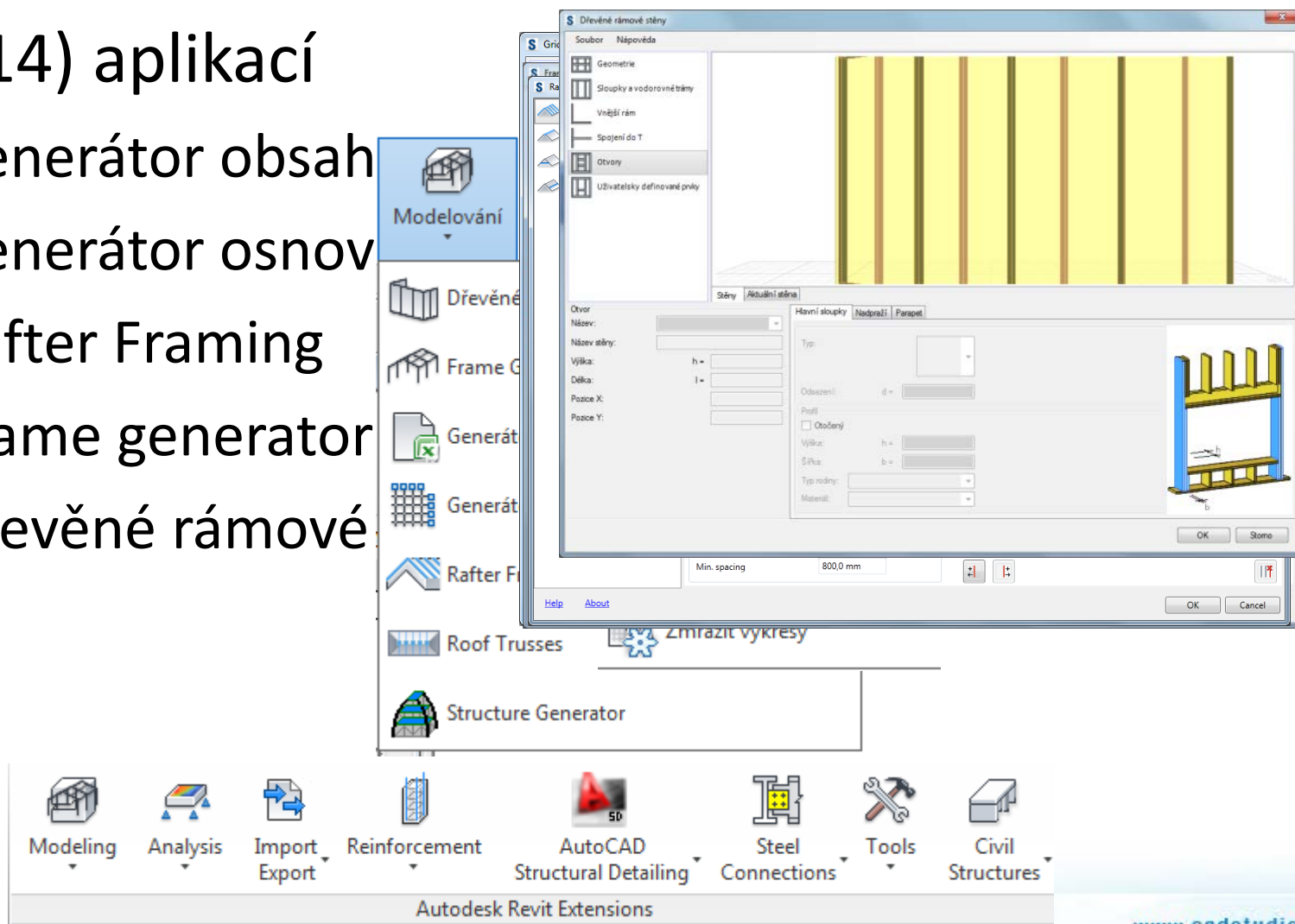
Title	Type
German Rescue Plan Content for Autodesk Revit 2013, Autodesk Revit Architecture 2013, and Autodesk Revit LT 2013	Design Content
Austrian Content Extension for Autodesk Revit 2013 and Autodesk Revit Architecture 2013	Design Content
French Content Library for Autodesk Revit 2013 and Autodesk Revit Architecture 2013	Design Content
German Content Extension for Autodesk Revit 2013, Autodesk Revit Architecture 2013, and Autodesk Revit LT 2013	Design Content
Service Pack 4 for Autodesk Smoke 2012 for Mac OS X Subscription Advantage Pack 2	Service Pack
Autodesk Showcase 2013 R1	Application
Alias 2013 Subscription Update 2	Service Pack
Roombook Areabook Extension for Autodesk Revit 2013 and Autodesk Revit LT 2013	Extension
Productivity Tools for AutoCAD Civil 3D 2013	Extension
Revit Extensions for Autodesk Revit 2013	Extension

Reinforcement

- Automatic Reinforcement Generation
- Beams
- Columns
- Continuous Footings
- Interferences of Reinforcing Bars
- Parapets
- Pile Caps
- Piles
- Retaining Walls
- Slab Corners
- Slab Openings
- Spread Footings
- Wall Corners
- Walls

Pro uživatele s předplatným - <http://subscription.autodesk.com>

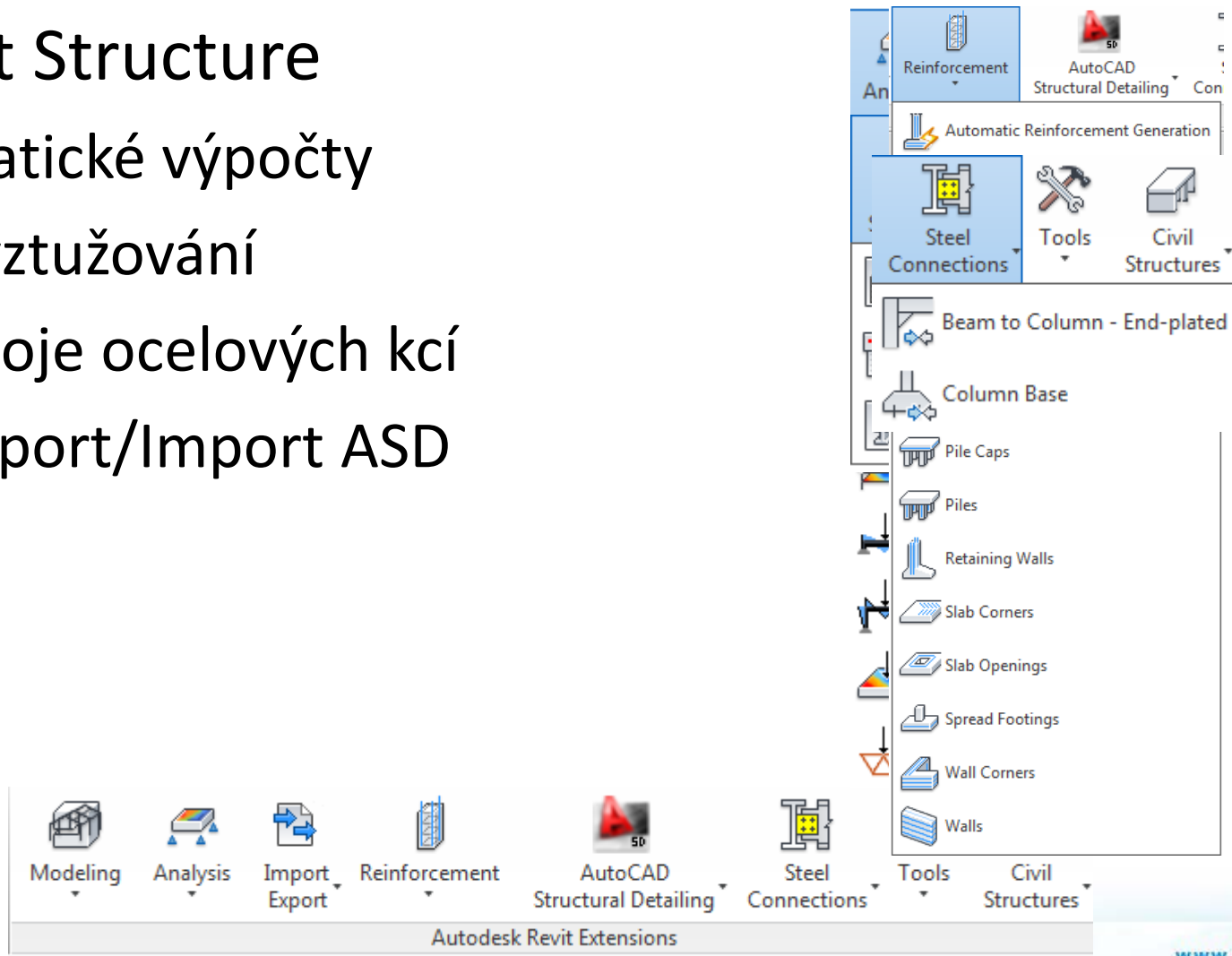
- 52 (14) aplikací
 - Generátor obsah
 - Generátor osnov
 - Rafter Framing
 - Frame generator
 - Dřevěné rámové



Pro uživatele s předplatným - <http://subscription.autodesk.com>

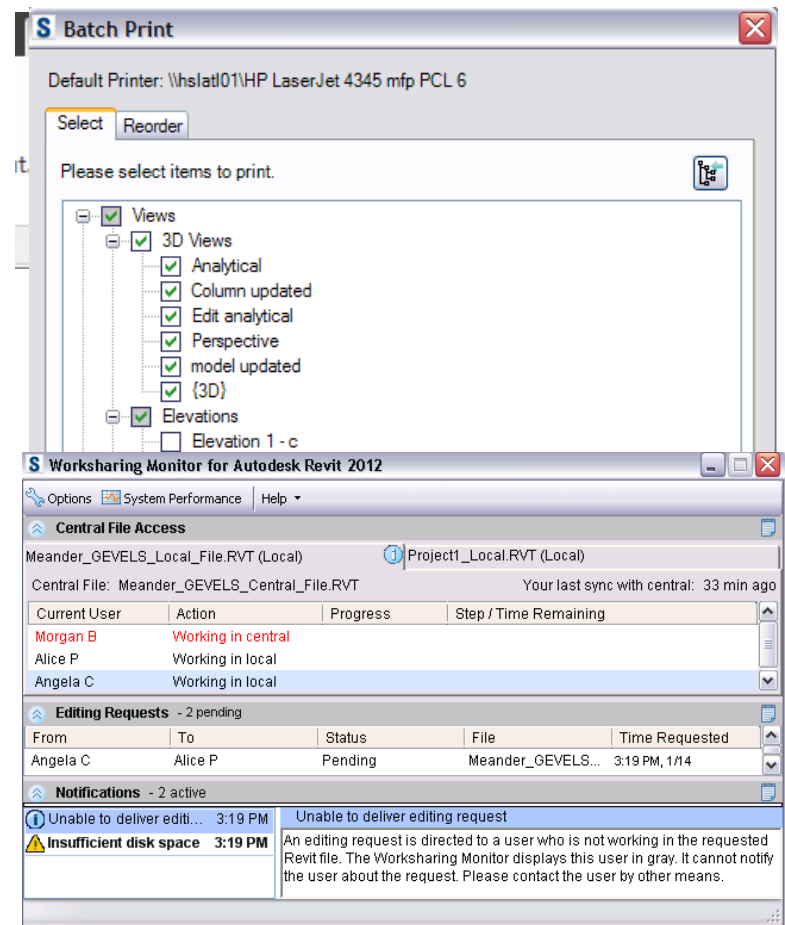
➤ Revit Structure

- Statické výpočty
- Vyztužování
- Spoje ocelových kcí
- Export/Import ASD



Pro uživatele s předplatným - <http://subscription.autodesk.com>

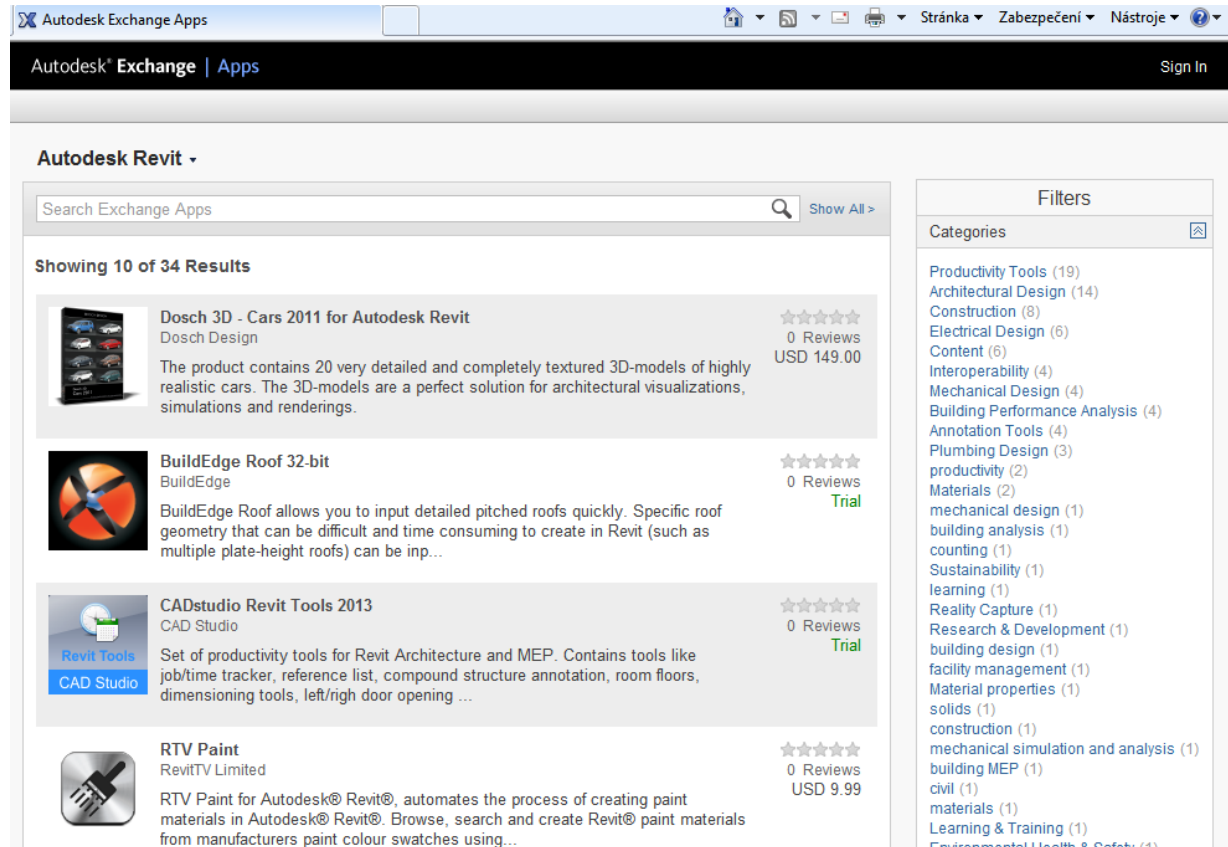
- Roombook
- Etransmit
- BatchPrint
- Worksharing monitor



<http://apps.exchange.autodesk.com>

➤ cca 80 aplikací

➤ 45 firem



The screenshot shows the Autodesk Exchange Apps website interface. The browser title is "Autodesk Exchange Apps". The page header includes "Autodesk Exchange | Apps" and a "Sign In" link. The main content area is titled "Autodesk Revit" and features a search bar with the text "Search Exchange Apps" and a "Show All >" link. Below the search bar, it indicates "Showing 10 of 34 Results".

The search results list four applications:

- Dosch 3D - Cars 2011 for Autodesk Revit** by Dosch Design. Price: USD 149.00. 0 Reviews.
- BuildEdge Roof 32-bit** by BuildEdge. Price: Trial. 0 Reviews.
- CADstudio Revit Tools 2013** by CAD Studio. Price: Trial. 0 Reviews.
- RTV Paint** by RevitTV Limited. Price: USD 9.99. 0 Reviews.

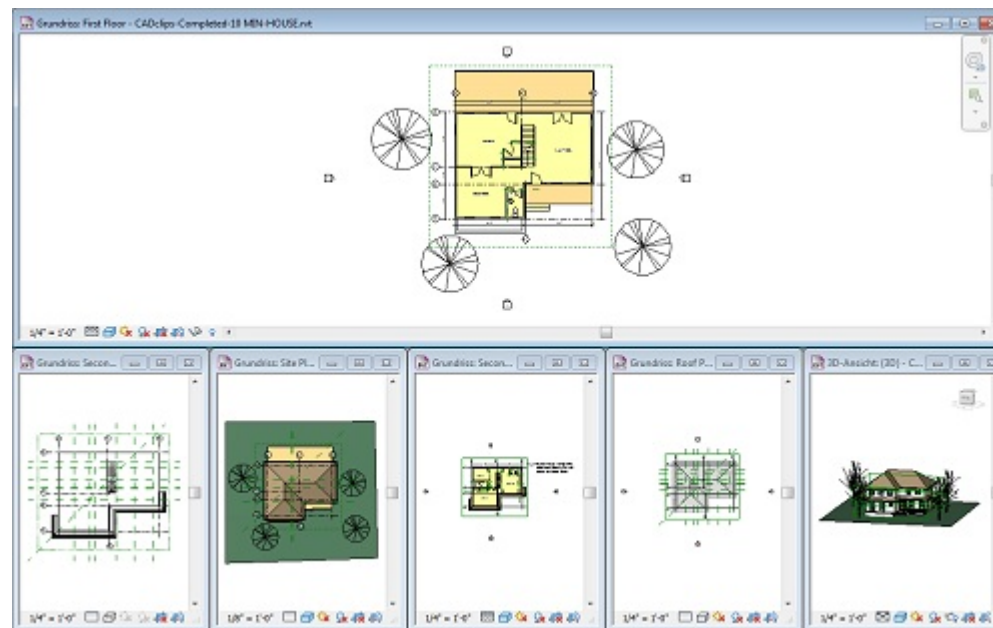
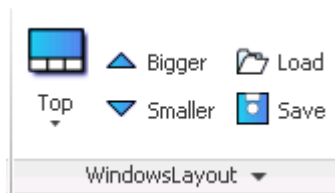
On the right side, there is a "Filters" section with a "Categories" list:

- Productivity Tools (19)
- Architectural Design (14)
- Construction (8)
- Electrical Design (6)
- Content (6)
- Interoperability (4)
- Mechanical Design (4)
- Building Performance Analysis (4)
- Annotation Tools (4)
- Plumbing Design (3)
- productivity (2)
- Materials (2)
- mechanical design (1)
- building analysis (1)
- counting (1)
- Sustainability (1)
- learning (1)
- Reality Capture (1)
- Research & Development (1)
- building design (1)
- facility management (1)
- Material properties (1)
- solids (1)
- construction (1)
- mechanical simulation and analysis (1)
- building MEP (1)
- civil (1)
- materials (1)
- Learning & Training (1)
- Environmental Health & Safety (1)

Aplikace zdarma

<http://www.acadgraph.de> , <http://apps.exchange.autodesk.com>

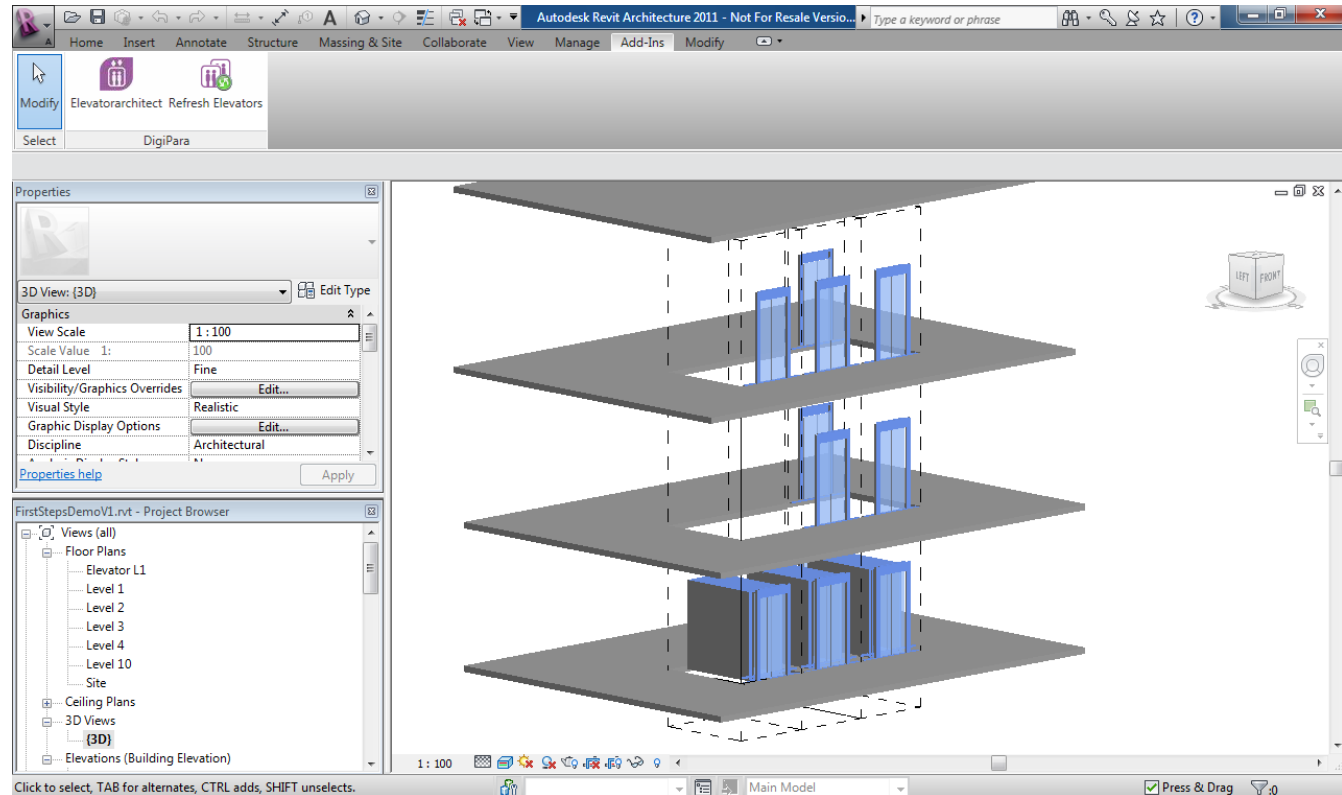
➤ Automatické rozmístění oken



*Zdarma

<http://www.digipara.com>, <http://apps.exchange.autodesk.com>

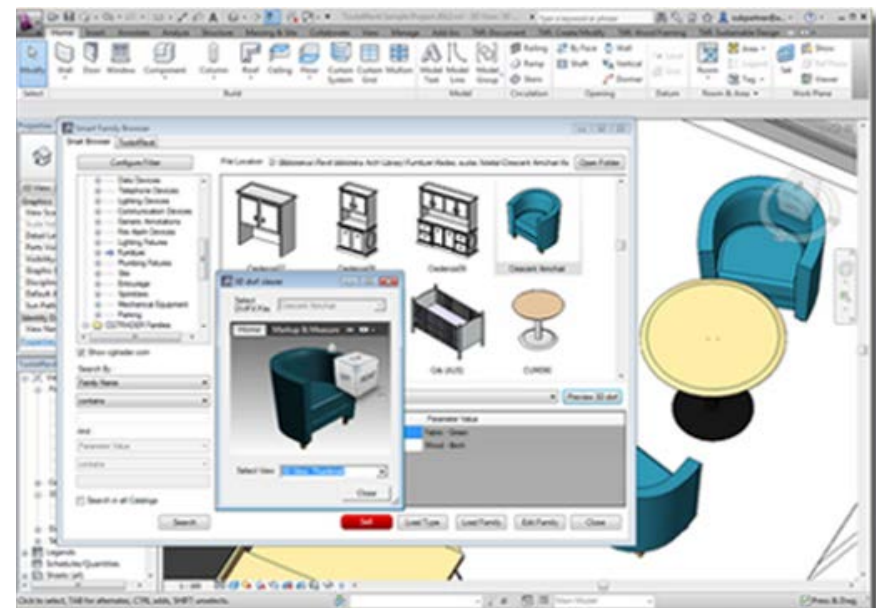
- Výběr podle výrobců (KONE, OTIS, Schindler)
- Průvodce návrhem



*Zdarma

<http://www.tools4revit.com>, <http://apps.exchange.autodesk.com>

- Prohlížeč rodin projektu / knihovny
- Vyhledávání podle parametrů
- Drag and Drop

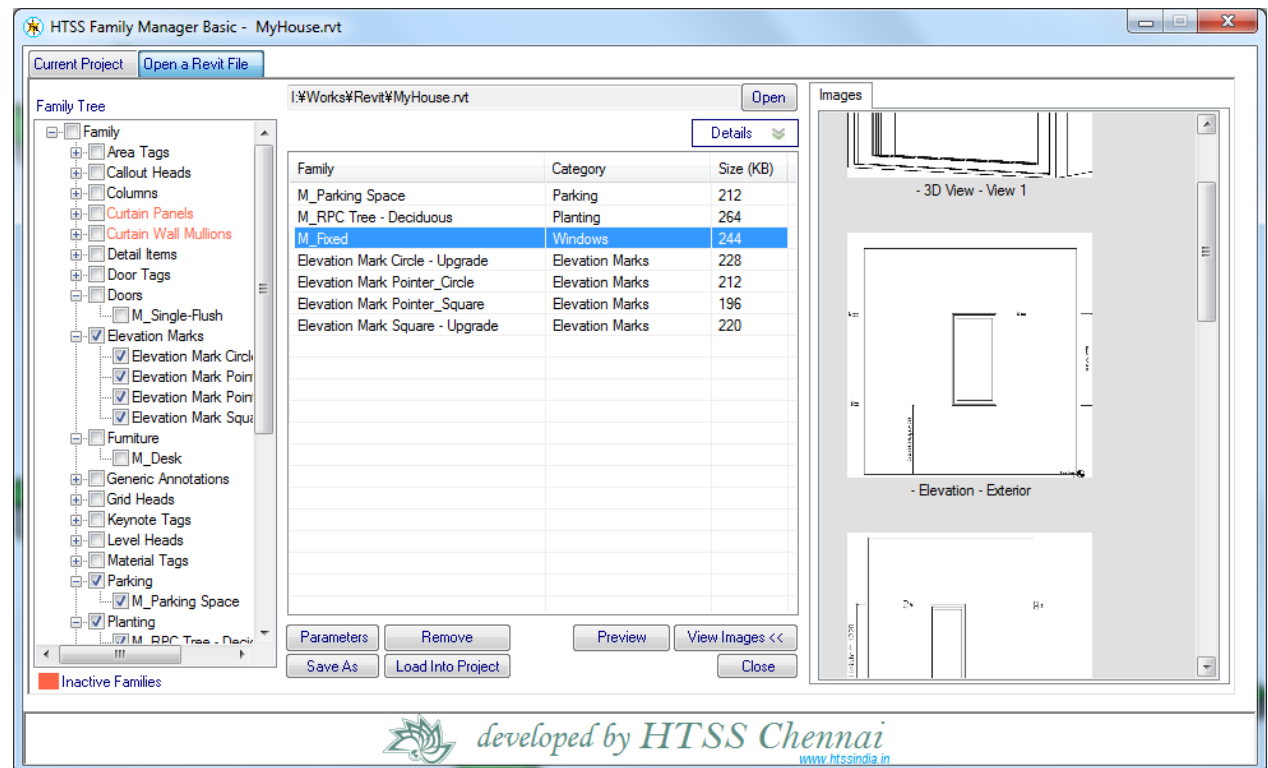


tools4revit
increase your productivity with tools for revit!

*Zdarma

[http:// www.htssindia.in](http://www.htssindia.in), <http://apps.exchange.autodesk.com>

- Přenášení rodin mezi projekty
- Hromadné ukládání na disk

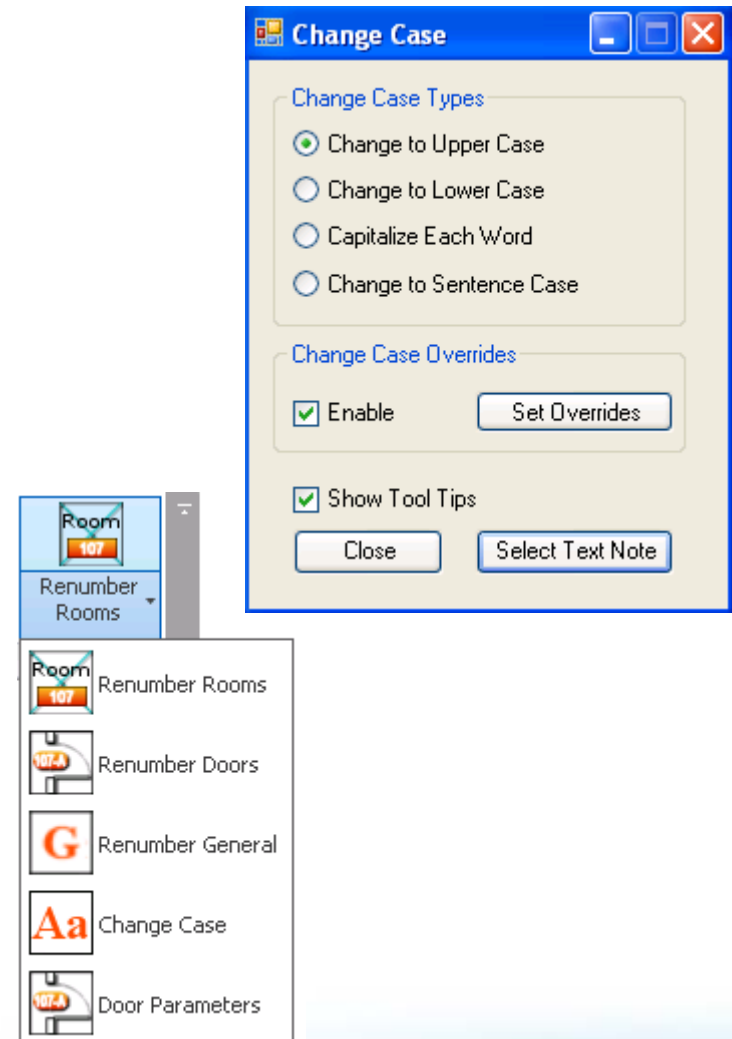


*Zdarma

<http://www.dccadd.com/>, <http://apps.exchange.autodesk.com>

➤ Sada utilit

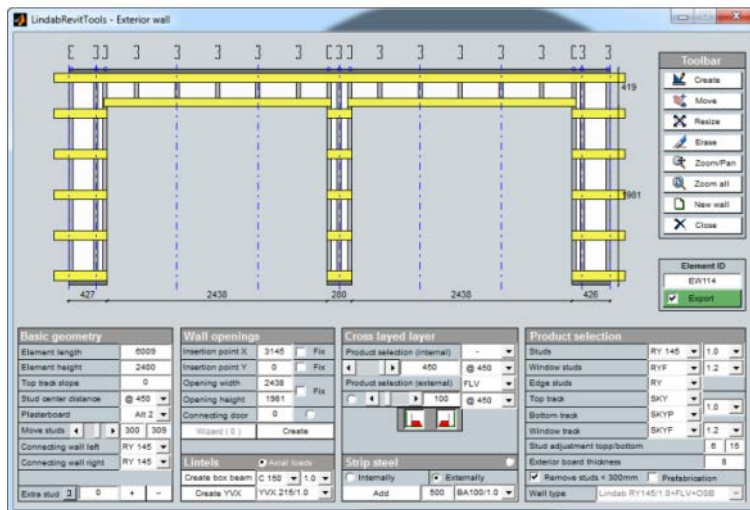
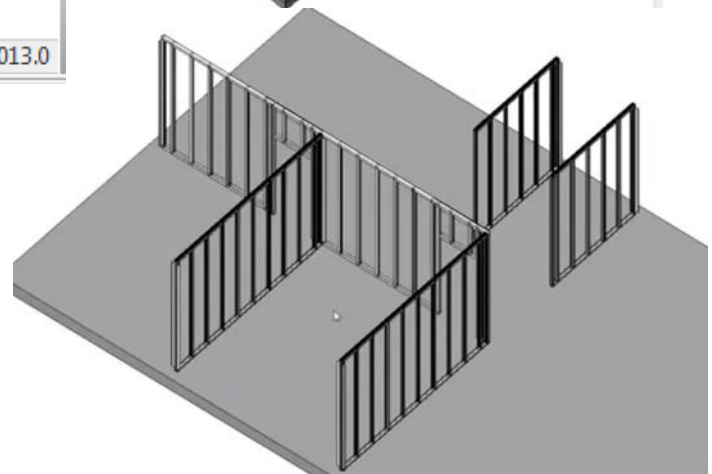
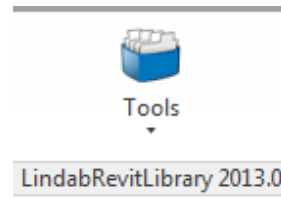
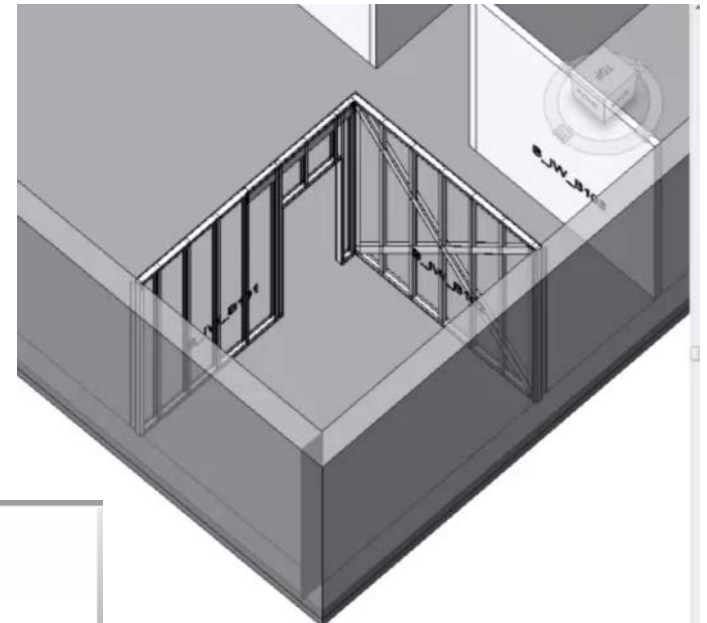
- Přechíslování prvků
- Změna formátování písma
- Přidání parametru z/do místnosti u dveří



*Zdarma

<http://www.lindab.com>

- Knihovna stěn a profilů
- Výkaz materiálů, stěn
- Automatické výkresy



*Zdarma



➤ Purge CAD Patterns
www.Revitonic.com



➤ Wall Opening Area



➤ StrucCope
<http://www.strucsoftsolutions.com>

➤ Charltes Revit User Group
<http://revitusergroup.com>

base extension distance	u.u
Top Constraint	Up t...
Unconnected Height	4000.0
Top Offset	0.0
Top is Attached	<input type="checkbox"/>
Top Extension Distance	0.0
Room Bounding	<input checked="" type="checkbox"/>
Related to Mass	<input type="checkbox"/>

StrucCope 0

- Cope by intersecting beams
- Cope all intersecting beams
- Remove all copings
- About

Structural
Structural
Enable Analy
Structural Us
Dimensions
Length
Area
Volume
Identity Data
Comments

Charlotte's Revit User Group Tools

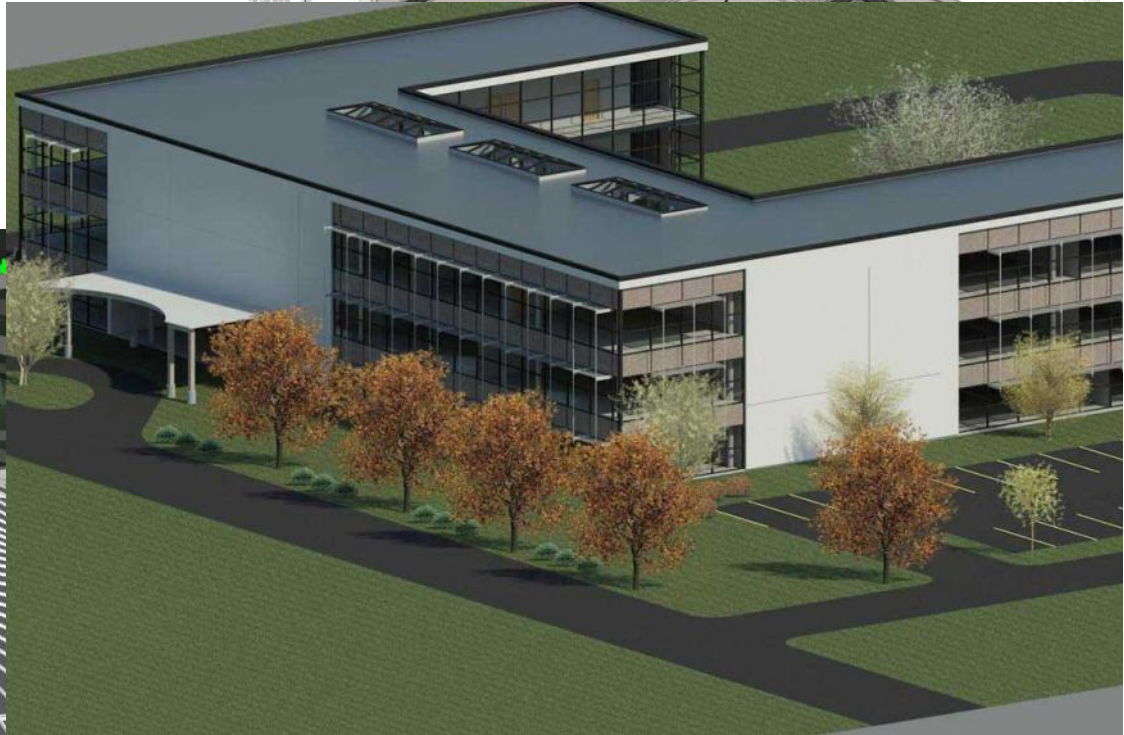
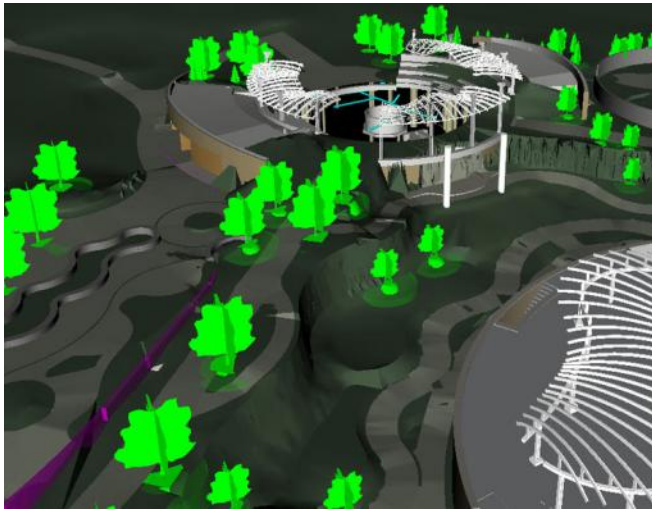
- Change Case
- Renumber Views
- Wall Filter
- Find Rooms
- Sheet Creator
- Email DWF
- Type Catalog
- FTP
- Screenshot
- Calc
- TPM
- Website
- About
- Options
- Check for Update
- Help

Komerční aplikace

EAGLE POINTS, <http://www.eaglepoint.com>

➤ Siteworks

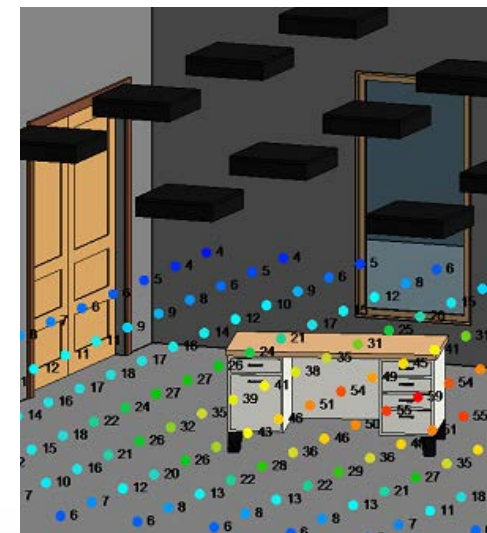
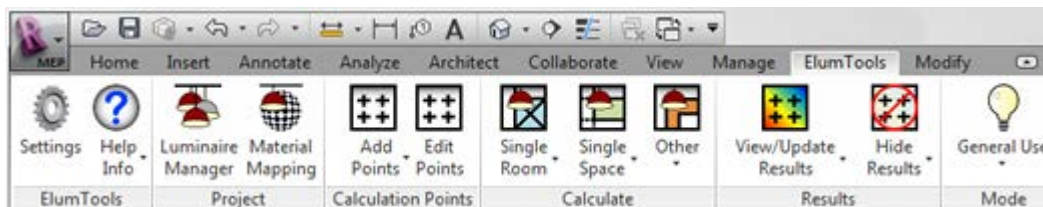
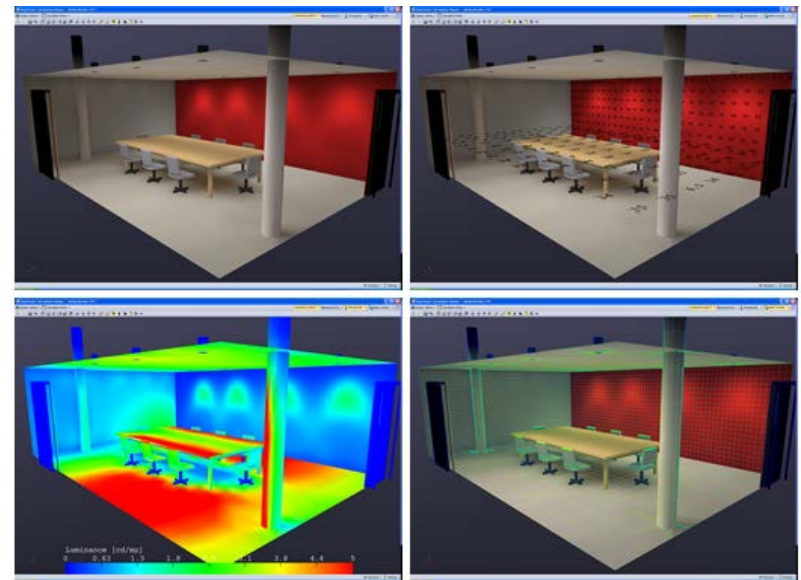
➤ LANDCADD



Courtesy of AECOM

ElumTools, <http://www.elumtools.com>

- Správa světel
- Mapování materiálů
- Vizualizace
- Výkazy

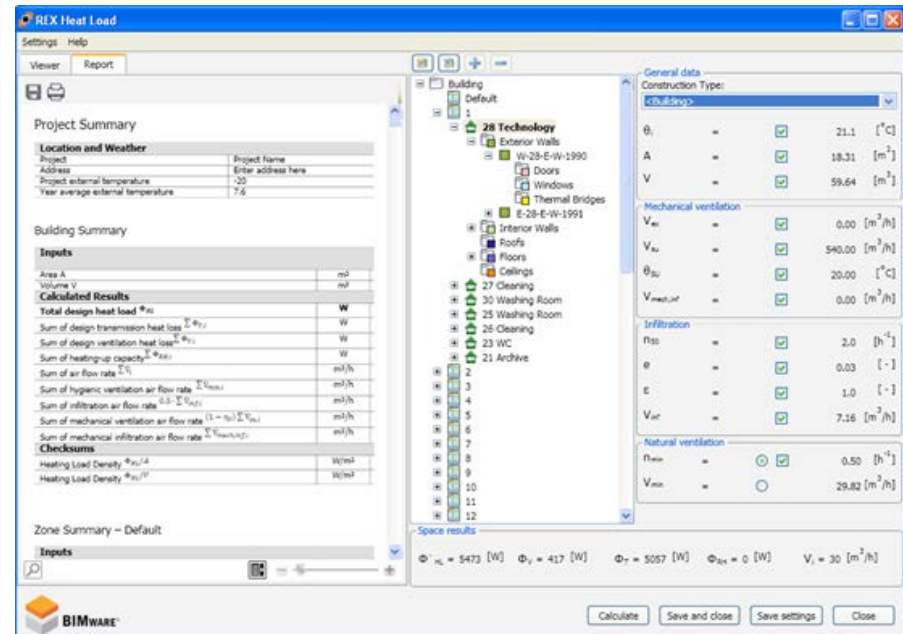
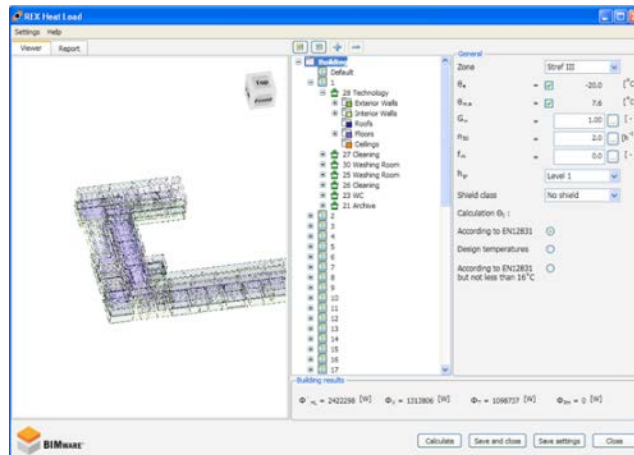


BIMware, www.bimware.com



➤ Heat Load

- Výpočet podle EN 12831
- Možnost upravovat data získaná z Revitu
- Snadné vykazování



*Určeno pro Revit MEP

➤ Rafter+

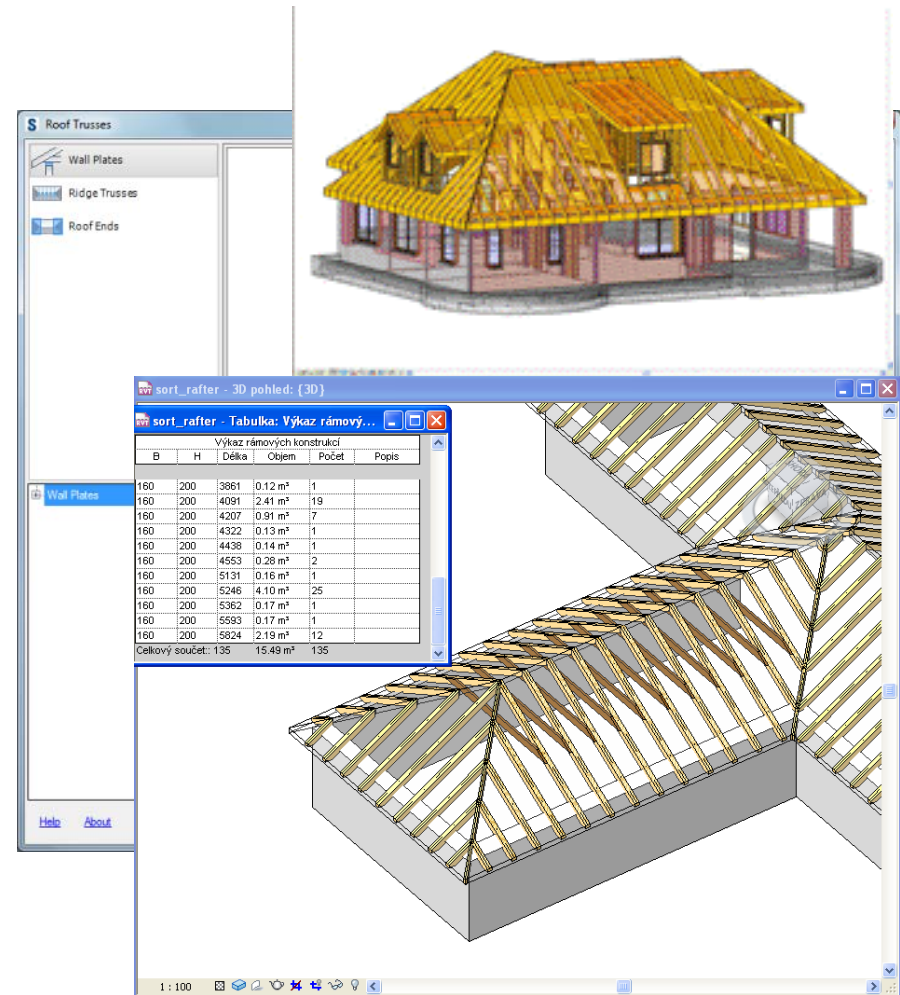
<http://www.tools4revit.com>

➤ Rafter framing *

Revit extension

➤ Roof Trusses *

Revit extension



*Pro uživatele s předplatným

➤ IFC Exporter for Revit 2013 *

<http://apps.exchange.autodesk.com>

➤ Solibri IFC Optimizer

<http://www.solibri.com>

➤ Wiip AmToDxf

<http://www.wiip.biz/>

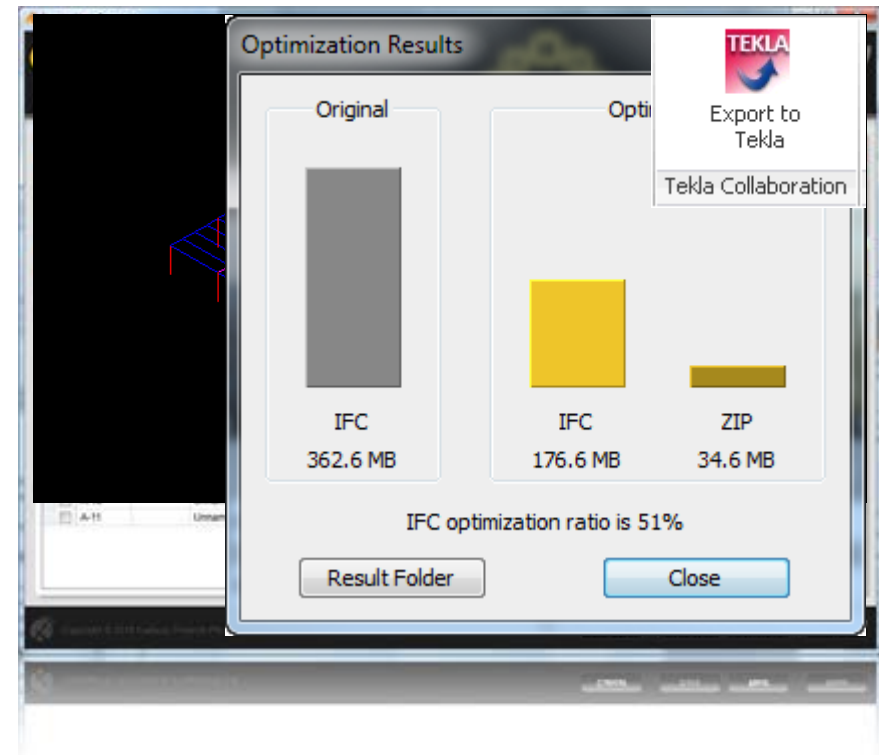
➤ Xrev Transmit

<http://www.xrev.com.au>

➤ Export to Tekla*

<http://www.tekla.com>

*Zdarma



➤ WIIP Export Schedules

wiip.biz

➤ Ideate Explorer

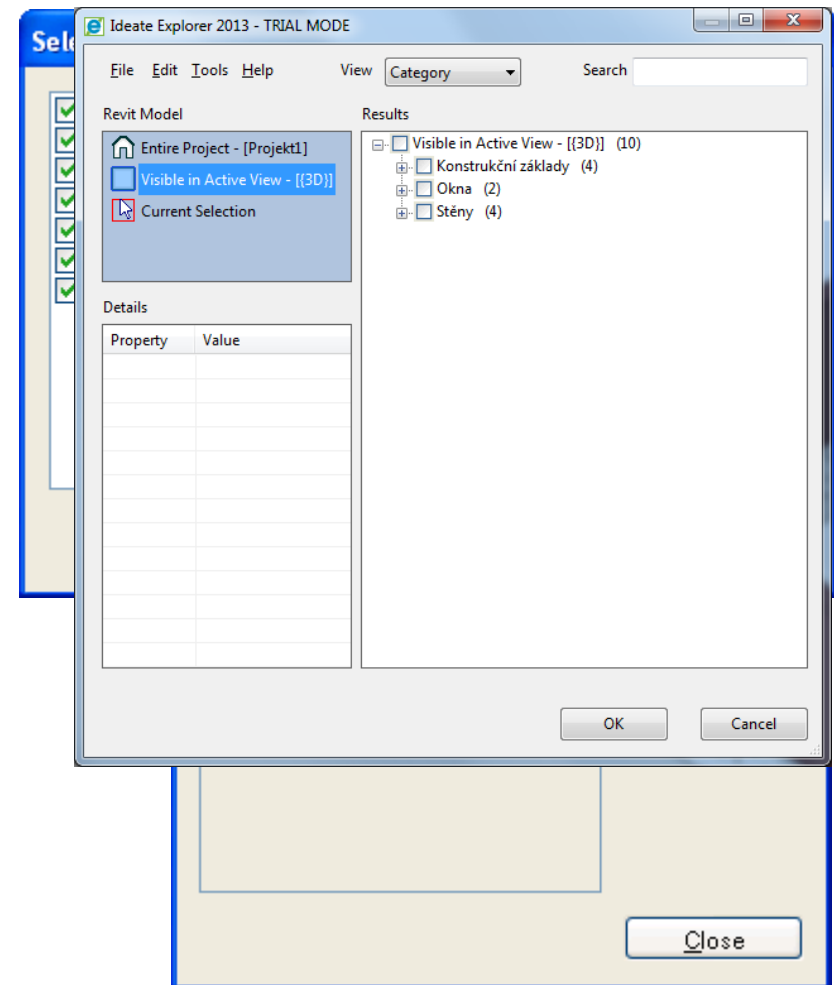
www.ideateexplorer.com

➤ Ideate BIMLink

www.ideateexplorer.com

➤ CTC Revit Excel Link

www.RevitExpressTools.com



<http://www.pinebush.com/>

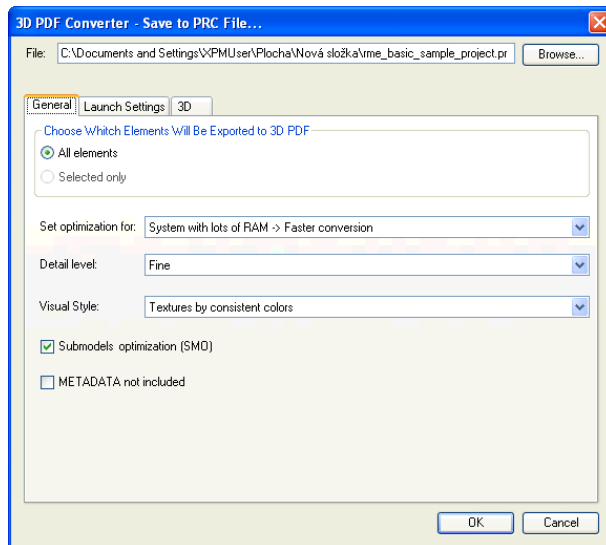
➤ Hyper PDF (Revit PDF Writer)

<http://www.pinebush.com/>

➤ 3DPDF Converter

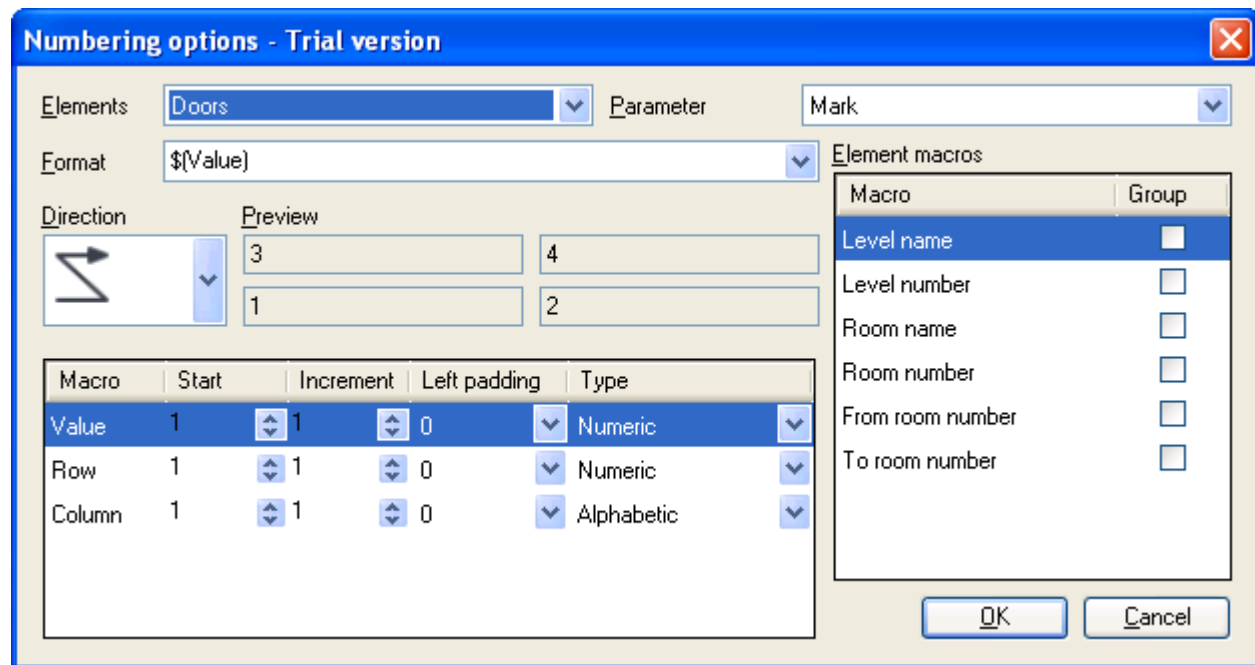
<http://www.3dasystems.com/>

HyperPDF[®]



<http://wiip.biz/>

➤ Wiip Numbering



➤ RTV Shared Parameter Manager

<http://www.rtvtools.com>

➤ Sumex Parameter Manager

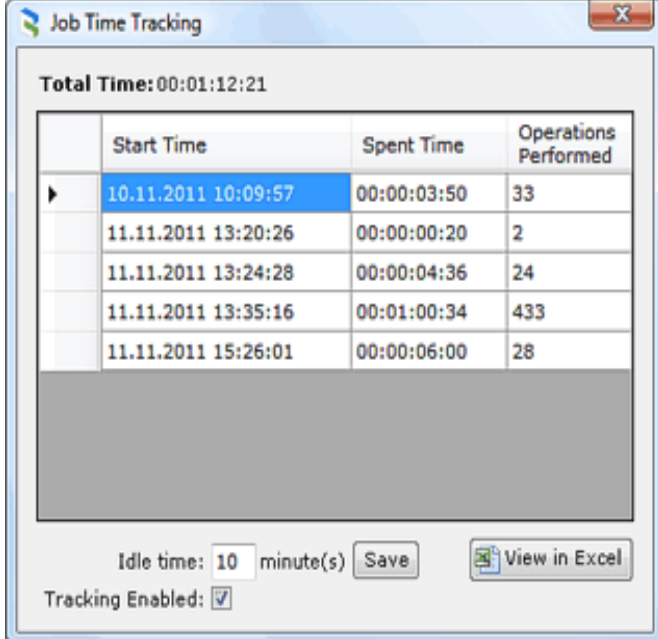
www.sumexdesign.com

➤ Revit Family Tools *

<http://www.revitexpresstools.com/>

➤ Sledování času

<http://www.cadstudio.cz>



The screenshot shows a window titled "Job Time Tracking" with a close button in the top right corner. Below the title bar, it displays "Total Time: 00:01:12:21". A table with four columns is shown: "Start Time", "Spent Time", and "Operations Performed". The first row is highlighted in blue. Below the table, there is a section for "Idle time" with a text box containing "10" and the label "minute(s)", a "Save" button, and a "View in Excel" button. At the bottom, there is a "Tracking Enabled" checkbox which is checked.

	Start Time	Spent Time	Operations Performed
▶	10.11.2011 10:09:57	00:00:03:50	33
	11.11.2011 13:20:26	00:00:00:20	2
	11.11.2011 13:24:28	00:00:04:36	24
	11.11.2011 13:35:16	00:01:00:34	433
	11.11.2011 15:26:01	00:00:06:00	28

*Zdarma

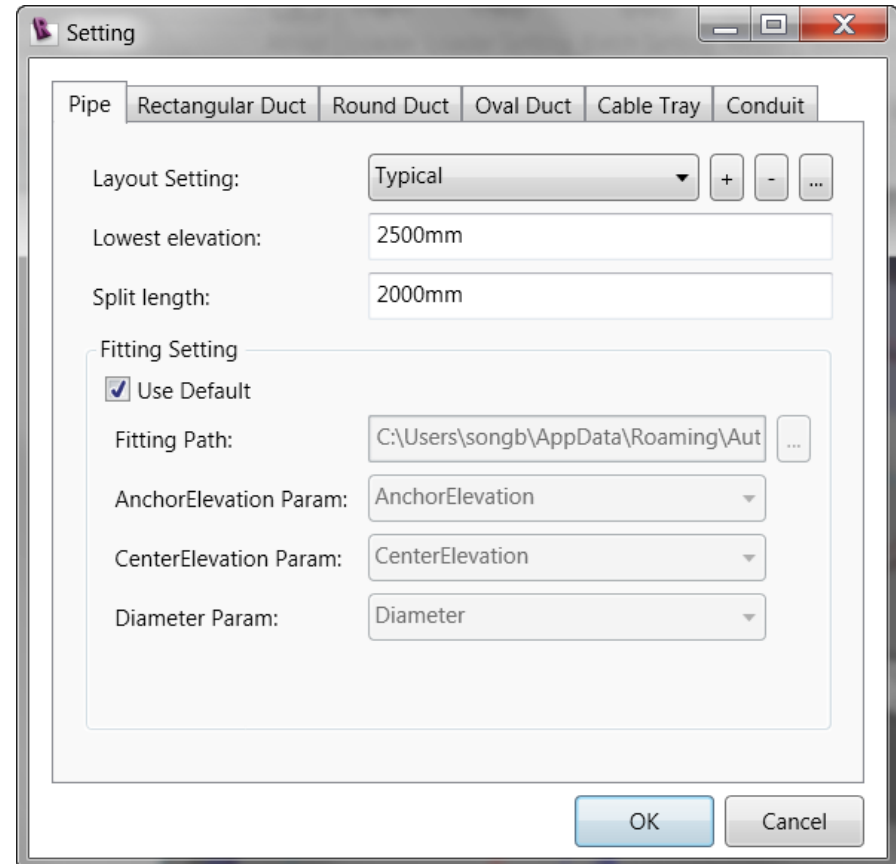
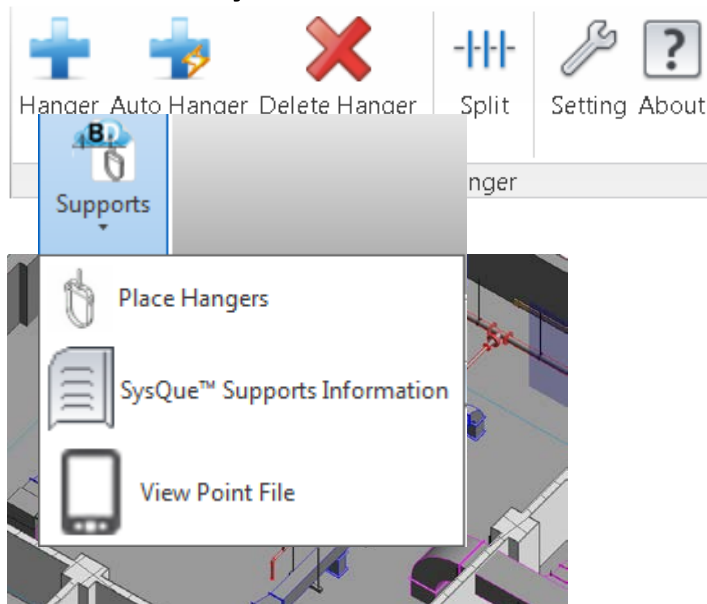
Podpory a závěsy

➤ Support and Hanger

www.yeahso.cn

➤ SysQu Supports

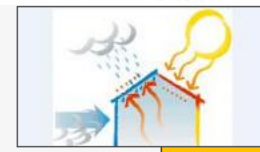
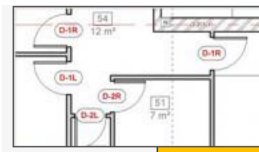
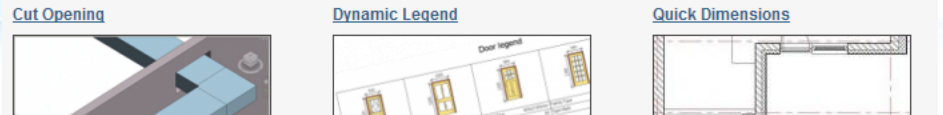
www.SysQue.net



Sady aplikací

<http://www.tools4revit.com/>

- Rafter +
- Cut Opening
- BIM Tree Manager
- ...další



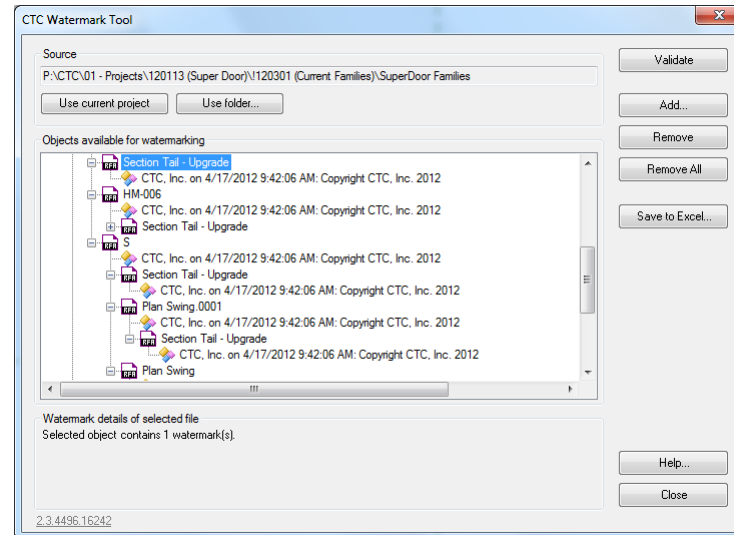
<http://www.arsoftwaresolutions.com.au>

- Vyhledávání prvků v projektu
- Přečíslování
- Export/import do Excelu
- Vytváření prvků z Excelu
- Legendy prvků
- Export do pdf, dwg a další
- **Revize**

 ARFind	 Make Section	 Setup Visibility	A>a Text Case	 Material Import/Export	A>a File Case	 Purge Materials	 Revision / Protect	 Help ArUtils
Find	Views	Visibility	Notes	Import / Export	Files	Utils	Monitor	Help

<http://www.cadtechnologycenter.com>

-  ➤ **Watermark**
-  ➤ **ProjectLink**
-  ➤ **BIMList**
-  ➤ **Excel Link**
-  ➤ **Revit Family Tools**



<http://www.kiwicodes.com>



➤ Family Browser



➤ Project Browser



➤ Keynote Browser



➤ Element Reference

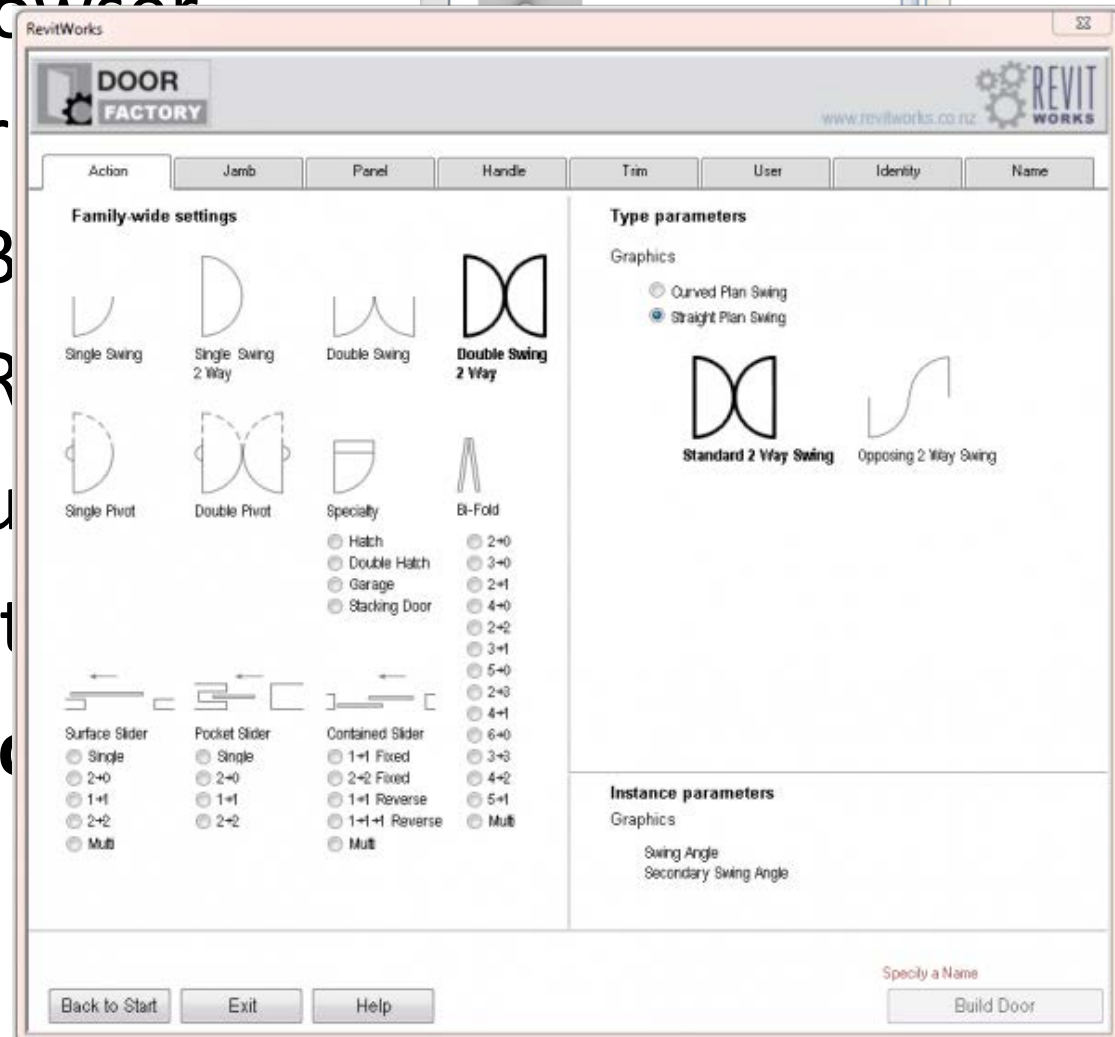


➤ Sheet Count



➤ Family Catalog

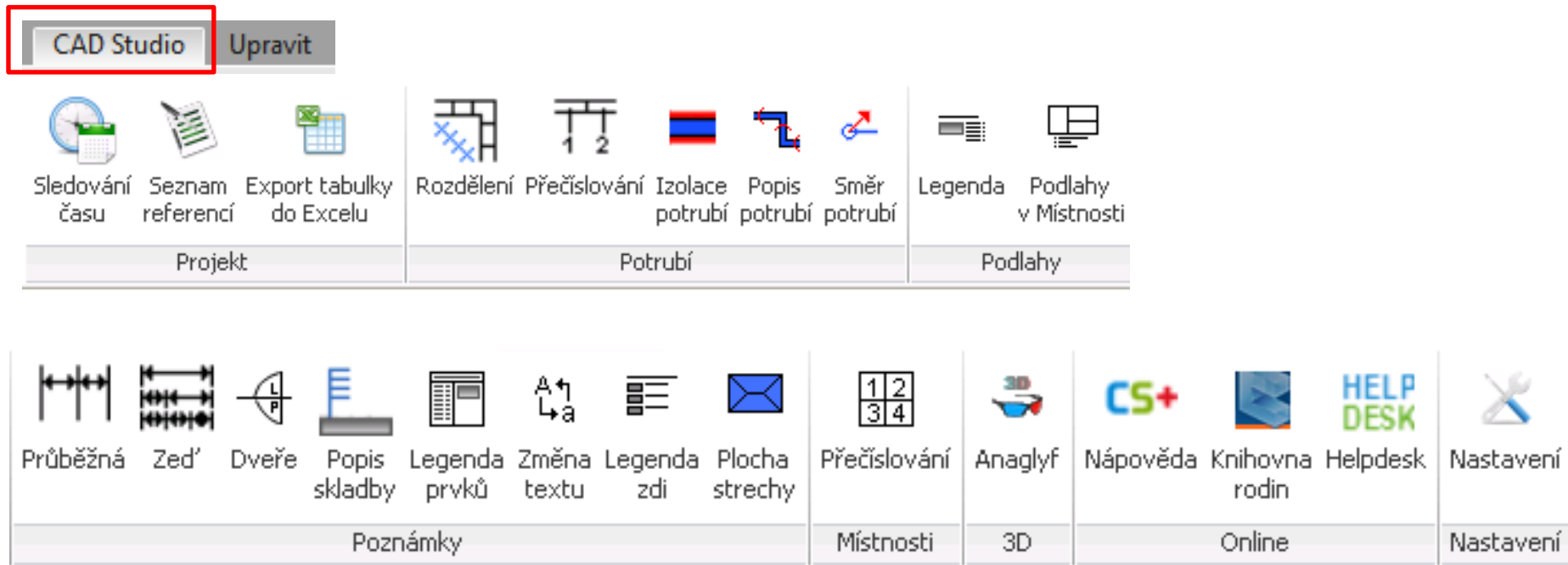
➤ Door factory













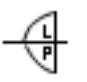


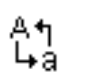


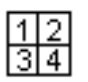







Efektivnější práce v Revitu – www.cadstudio.cz/revittools

➤ Revit Architecture/MEP/Structure

➤ 20 aplikací



CAD Studio			Upravit										
													
Sledování času	Seznam referencí	Export tabulky do Excelu	Rozdělení	Přečíslování	Izolace potrubí	Popis potrubí	Směr potrubí	Legenda	Podlahy v Místnosti				
Projekt			Potrubí				Podlahy						
													
Průběžná	Zed'	Dveře	Popis skladby	Legenda prvků	Změna textu	Legenda zdi	Plocha strechy	Přečíslování	Anaglyf	Nápověda	Knihovna rodn	Helpdesk	Nastavení
Poznámky				Místnosti				3D	Online		Nastavení		

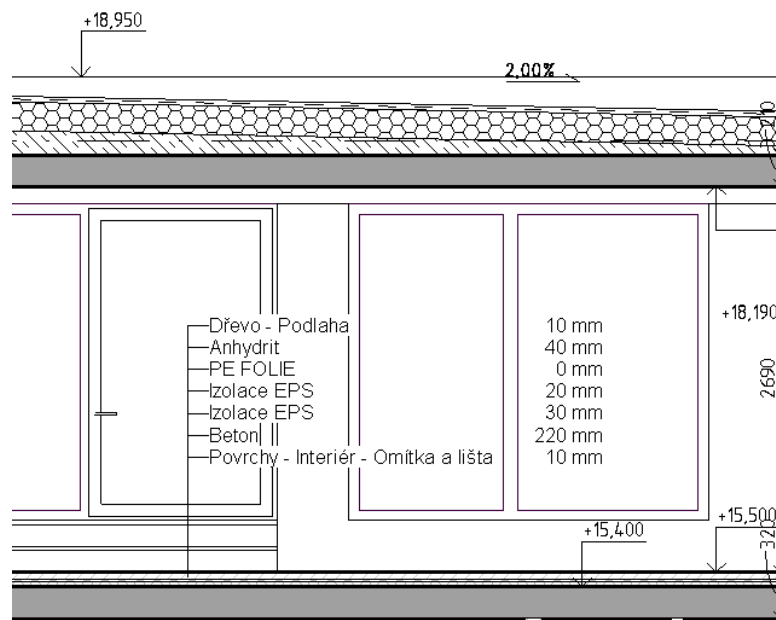
CAD Studio Revit Tools

➤ Automatický popis skladby

➤ Podlahy


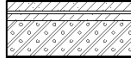
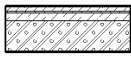
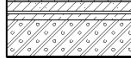
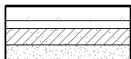

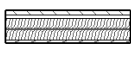

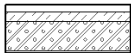
➤ Stěny

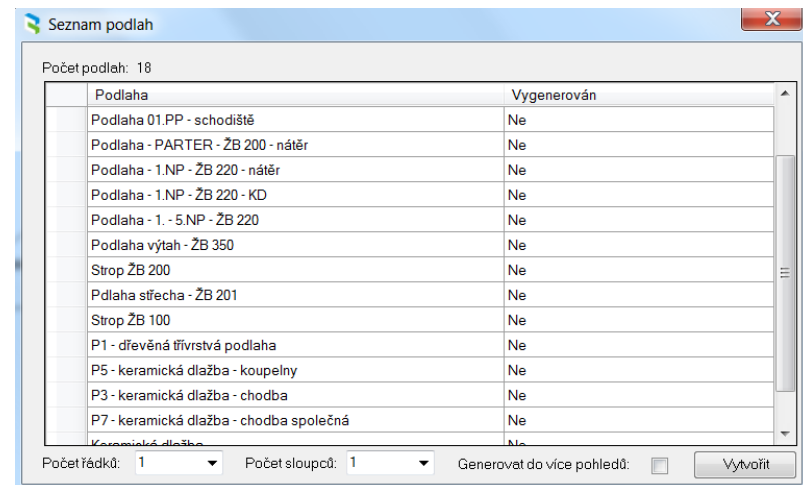
➤ Střechy



CAD Studio Revit Tools

- Seznam podlah
- Popis vrstev
- Označení podlahy


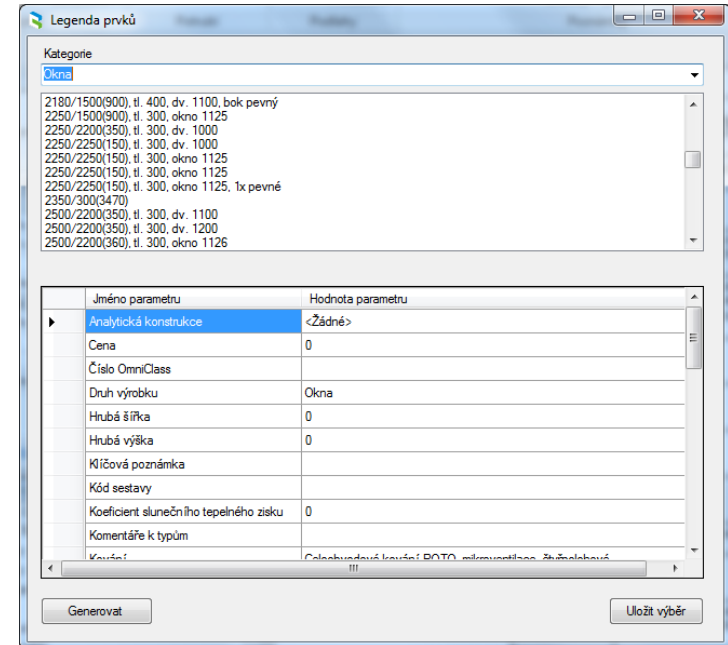
	P1 Keramická dlažba Bet. mazanina Podkladní beton. mazanina Štěrpkopiskový podsyp	10 mm 90 mm 100 mm 100 mm		P6 Keramická dlažba Bet. mazanina Podkladní beton. mazanina Štěrpkopiskový podsyp	10 mm 90 mm 100 mm 100 mm
	P2 Betonová dlažba Bet. mazanina Podkladní beton. mazanina Štěrpkopiskový podsyp	80 mm 20 mm 100 mm 100 mm		P7 Betonová dlažba Bet. mazanina Podkladní beton. mazanina Štěrpkopiskový podsyp	80 mm 20 mm 100 mm 100 mm
	P3 Betonová dlažba Bet. mazanina Podkladní beton. mazanina Štěrpkopiskový podsyp	80 mm 20 mm 100 mm 100 mm		S1 Keramická dlažba Bet. mazanina Podkladní beton. mazanina Štěrpkopiskový podsyp	10 mm 90 mm 100 mm 100 mm
	P4 Betonová dlažba Bet. mazanina Podkladní beton. mazanina Štěrpkopiskový podsyp	80 mm 20 mm 100 mm 100 mm		S2 Betonová dlažba Bet. mazanina Podkladní beton. mazanina Štěrpkopiskový podsyp	80 mm 20 mm 100 mm 100 mm
	P5 Sádkartonový pohled s výplní z minerální vlny ROCKWOOL ROCKMIN	50 mm			



CAD Studio Revit Tools

- Okna
- Dveře
- Nábytek
- Obecné modely

OKNO 1000/2200(350)			
OZNAČENÍ	PODLAŽÍ	Š.NP	CELKEM
	KUSŮ	1	1
Kování	Celoobvodové kování ROTO, mikroventilace, čtyřpolohové		
Materiál	Dřevěná okna - smrk, nerezopojované profily, povrchová úprava transparentní lakovou		
Materiál křky	Kov - Chrom		
Materiál parapetu	Kov - Pozink		
Materiál rámu	Dřevo - Teak		
Materiál zasklení	Sklo		
Otevírání	Otevíravé, stápné		
Osmačeni typu	63		
Popis	U-1,1 W/m2K (sčbové U+1,4 W/m2K), útlum 30 dB		
Šířka	1000		
Výška	2200		
Výška rozzení křky	1100		
Zasklení	Thermozolární dvojsklo, číré, 16 mm		

CAD Studio Revit Tools

- Detekce podlah v místnosti
- Zápis typu podlahy do místnosti



Podlahy v Místnosti

Podlahy

Tabulka místností 1NP						
Číslo	Název	Podlaží	Plocha	Typ Podlahy	Povrchy stěn	Povrch stropu
01.1	Komora	1 NP	6.8 m ²	P1	Štuková omítka + malba	Štuková omítka + malba
01.2	Zádveří	1 NP	5.4 m ²	P1	Štuková omítka + malba	Štuková omítka + malba
01.3	Prádeln	1 NP	7.1 m ²	P1	Štuková omítka + malba	Štuková omítka + malba
01.4	Koupeln	1 NP	4.9 m ²	P1	Štuková omítka + malba	Štuková omítka + malba
01.5	Pokoj	1 NP	13.2 m ²	P7	Štuková omítka + malba	Štuková omítka + malba
01.6	Ložnice	1 NP	14.0 m ²	P7	Štuková omítka + malba	Štuková omítka + malba
01.7	Koupeln	1 NP	3.2 m ²	P1	Štuková omítka + malba	Štuková omítka + malba
01.8	Obývací	1 NP	38.5 m ²	P7	Štuková omítka + malba	Štuková omítka + malba
01.9	Kuchyň	1 NP	40.9 m ²	P2	Štuková omítka + malba	Štuková omítka + malba
01.10	Chodba	1 NP	16.3 m ²	P7, P3	Štuková omítka + malba	Štuková omítka + malba
01.11	Chodba	1 NP	4.1 m ²	P7	Štuková omítka + malba	Štuková omítka + malba
Celkový součet:			154.3 m ²			

CAD Studio Revit Tools

- Číslování místností/prostorů
- Automatické přečíslování

Typ Elementu:

Aktuální číslo:

Počet nul:

Předpona:

Přípona:

Automaticky přečíslovat

Samostatné undo

Přečíslování - Číslo je používáno

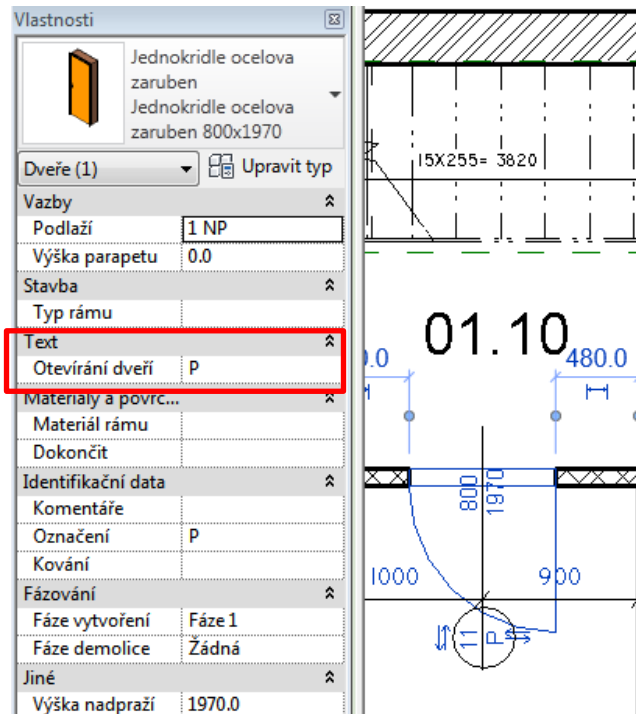
Chcete přečíslovat nebo prohodit čísla?

"5" je již používáno jiným prvkem Místnost a dva Místnost prvky by neměli mít shodné číslo. Můžete je přečíslovat nebo prohodit

- ➔ Přečíslovat teď
- ➔ Vždy přečíslovat
- ➔ Prohodit místnosti
- ➔ Zrušit

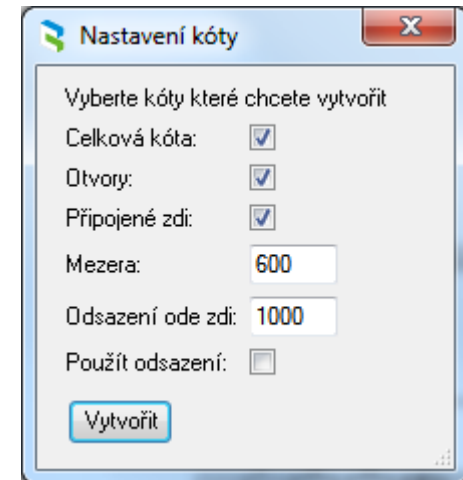
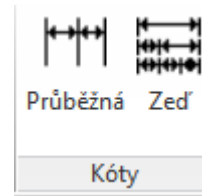
CAD Studio Revit Tools

- Automatická detekce otevírání dveřního křídla
- Načtení popisky dveří



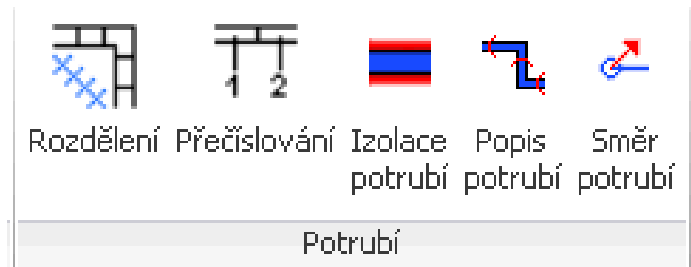
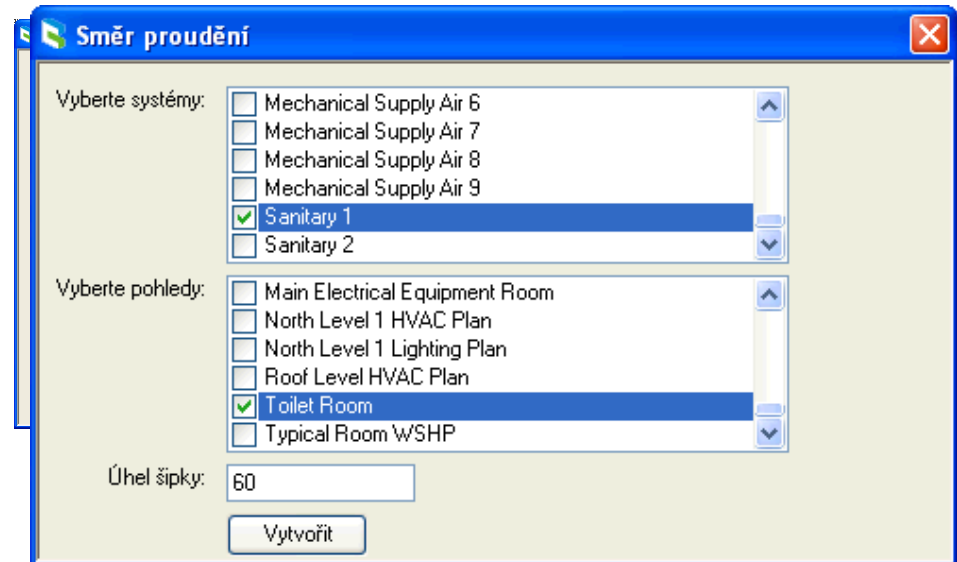
CAD Studio Revit Tools

- Průběžná kóta
- Kótování zdí
 - Celková kóta
 - Připojené stěny
 - Otvory



CAD Studio Revit Tools

- Rozdělení potrubí
- Přečíslování potrubí
- Izolace potrubí
- Popis potrubí
- Směr toku
- Rozvinutý řez



CAD Studio Revit Tools

- Export do Excelu
- Nahradit text
- Plocha střechy
- Anaglyf
- Knihovna rodin



Knihovny prvky

➤ Knihovna rodin

<http://www.cadforum.cz>

➤ BIMStop Tools

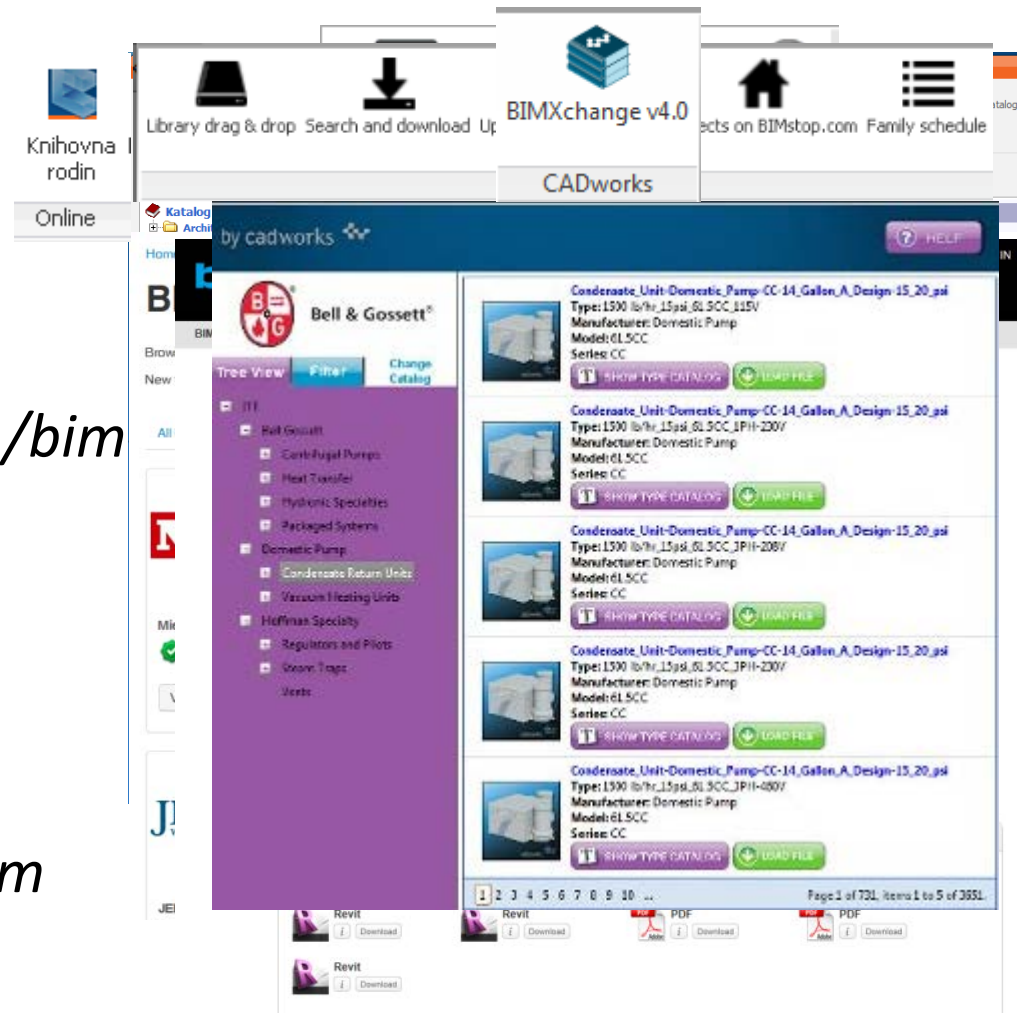
<http://www.bimstop.com/bim>

➤ BIMObject

<http://bimobject.com>











➤ CADworks

<http://www.engworks.com>



Autodesk Revit 2013 - UNREGISTERED VERSION - rme_ba










Architecture Structure Systems Insert Annotate Analyze Massing & Site Collaborate View Manage Add-Ins BIMobject Revit Express Tools Elur

 Create PRC	 Create PDF	 Help	 IFC Exporter for Revit 2013	 Transmit a model	Help About	 BIMXchange v4.0	 Piping Productivity Sample	 CTC WaterMark	 Family Tools	 Room 107
3DA SYSTEMS			IFC Exporter	eTransmit		CADworks	CADworks Trial	CTC WaterMark	Revit Family Tools	D C CADD

ic_sample_project - Section: Main Electrical Distribution

Type a keyword or phrase

Tools HTSS Add-Ins IMAGINIT CAD Studio SumexDesign T4R: Create/Modify YeahSo Modify

 Elevatorarchitect	 Create or update in Revit	 Export to Tekla	 BIMLink	 Explorer	 Left	 Purge Linetypes	 StrucCope 0	 Export all schedules to MS Excel	123
DigiPara		Tekla Collaboration	Ideate BIMLink	Ideate Explorer	WindowsLayout	Revitonic	StrucCope	Wiip Export Schedules	Wiip Numbering



vaclav.statecny@cadstudio.cz



CAD Studio a.s.

tel. +420 841 111 124

info@cadstudio.cz

www.cadstudio.cz – www.cadforum.cz