



**NetApp™**  
Go further, faster



Systems

# NetApp FAS2000 Series

Take control of your fast-growing data and maximize your shrinking budgets with an affordable, and easy-to-use storage system from NetApp

## KEY BENEFITS

### Experience value

Acquire segment-leading efficiency, performance, and scalability at an affordable price.

### Adapt easily and affordably to growing storage needs

Expand capacity, add incremental functionality, and upgrade to a larger system quickly and nondisruptively.

### Unburden your overextended IT staff

Leverage a comprehensive set of management tools to optimize performance and manage system health without the need for extensive storage expertise.

### Reduce cost

Get a lower total cost of ownership for an entry-level storage system.

## THE CHALLENGE

### Explosive data growth

Whether you are responsible for a remote or branch office, a department, or a midsized enterprise, you are challenged more than ever before by shrinking budgets, overextended staff, and the need to do more with less. These challenges, coupled with the increasing complexity of your Windows® environment, can quickly eat into your budget and affect your productivity.

## THE SOLUTION

### Build for now and for the future

As your company grows, so does your need for efficient data storage. At NetApp, we think that you should install a data infrastructure only once and then expand as your needs grow. Our common end-to-end Unified Storage architecture makes it possible for you to expand capacity and add functionality to our systems quickly and easily. NetApp® FAS2000 series systems deliver the right blend of price, performance, and scalability.

Our FAS2000 series entry systems offer you excellent value:

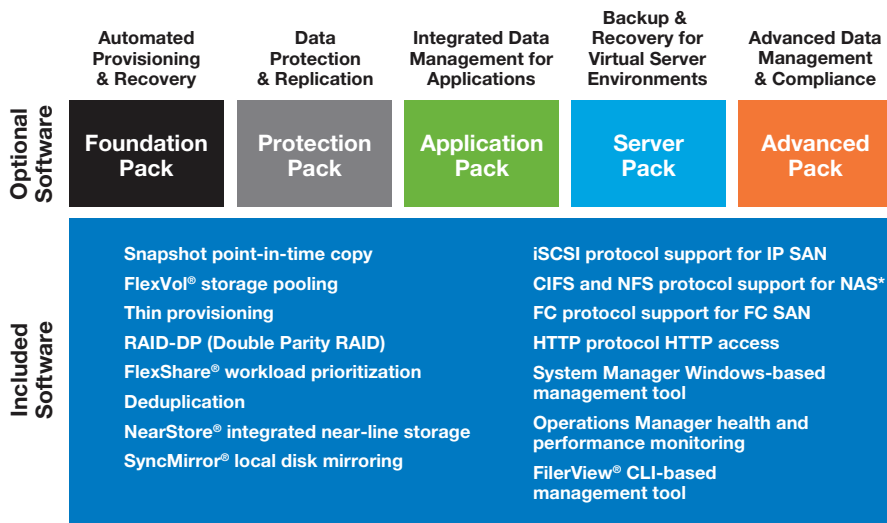
- Integrated block- and file-level data access over Fibre Channel and Ethernet networks delivers capacity where you need it, when you need it, regardless of user or application

- Primary and/or secondary storage
- Intelligent management software
- Data-protection capabilities of high-end systems with NetApp ease of use
- Internal SAS (serial-attached SCSI) or SATA drives
- Built-in remote management

## INCREASE EFFICIENCY

NetApp FAS2000 systems provide a powerful range of technologies and features based on Data ONTAP® to help increase storage utilization and the efficiency of your system and storage administrators.

- NetApp Snapshot™ provides point-in-time images, enabling you to perform near-instantaneous file-level or full data set recovery, and its minimal performance overhead makes it uniquely suited for protecting your production data.
- Thin provisioning helps avoid the costly over provisioning and time-consuming reconfiguration that is typical with other storage solutions.
- Deduplication enables you to store only one copy of each unique data object, substantially reducing capacity requirements.
- Highly efficient RAID-DP® protects against multiple failures in a RAID group.



\* Included on preconfigured FAS2020 systems.

Figure 1) Included software and optional software packs.

### ADAPT QUICKLY TO CHANGE

To help your data storage infrastructure adapt as your business grows, we offer:

- A new level of performance to support your most demanding applications
- New integrated SAS connectivity that enables up to 136TB of capacity as needed to support all your workloads

With the breadth of included and optional software you can:

- Dynamically expand or contract volumes or LUNs with a single command
- Upgrade from entry-level FAS2000 systems to midrange and high-end NetApp systems, using the same operating system, toolset, and software products
- Easily expand data management capabilities as your needs grow by using optional NetApp Software Packs,\* which provide enterprise-proven capabilities for automated provisioning and restoration, simple efficient disaster recovery, automated application, and virtual machine-aware backup, recovery, and cloning

New simplified product structure enables flexibility to order preconfigured systems that include high-capacity drives at attractive prices; or customize your configuration by ordering configure-to-order systems that allow you to choose drive quantity, type, and capacity.

### SIMPLE TO ACQUIRE, DEPLOY, AND MANAGE

You don't need to be a storage expert to acquire, deploy, and manage FAS2000 storage systems and to keep your NetApp storage infrastructure in line with business requirements.

With NetApp System Manager, you can:

- Rapidly deploy NetApp storage systems, typically within minutes after installation.
- Provision storage for SAN (iSCSI/FCP) and NAS (CIFS/NFS), for both physical and virtualized server environments.
- Simple, workflow-based wizards automate the most common device management tasks.
- Manage NetApp storage via your Windows Management Console, minimizing training and management costs.\*\*

### LOWER TCO

The FAS2000 is an economical storage system, and NetApp's unique data management capabilities help the FAS2000 support lower TCO than other systems in its class.

FAS2000 series storage systems offer you:

- Segment-leading efficiency that can cut storage cost by 50%
- Universal knowledge set for all products that can slash administrative overhead by up to 60%
- No needs for retraining as you expand capabilities or upgrade to larger systems.

According to an analysis by Oliver Wyman, with a NetApp solution you get lower acquisition costs, lower management costs, and lower system downtime costs.

Managing server and application sprawl on a shoestring budget is now a lot easier with the NetApp FAS2000 series.

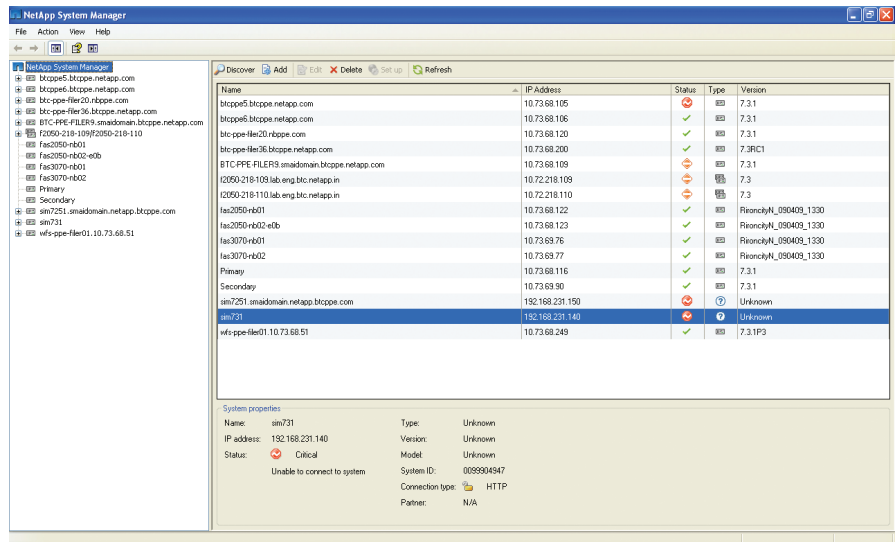


Figure 2) Simple, intuitive and easy to use NetApp System Manager Console.

## CHOOSING THE RIGHT SYSTEM FOR YOUR NEEDS

All members of the FAS2000 family feature Data ONTAP and offer industry leading technology in an affordable, easy-to-use package. Each system provides segment-leading performance, efficiency, and value.

NetApp offers three systems in the FAS2000 family to help you find the perfect balance of price, performance, and features to best fit your needs.

### FAS2020

**Most affordable platform in family, ideal for value-oriented deployments**

- For midsized enterprises, remote offices, and local storage that need low system acquisition costs
- Excellent for consolidating virtualized environments with one to three Windows applications and lighter file-serving workloads
- Offered in easy-to-order, preconfigured systems that include high-capacity drives at attractive prices

### FAS2040

**Ideal for higher performance or capacity needs**

- For distributed or midsized enterprise sites that require more performance and higher capacity
- Ideal for consolidating virtual environments with multiple workloads and Windows applications
- Offered in flexible configure-to-order systems that allow you to choose drive quantity, type, and capacity.

### FAS2050

**Ideal for specialized storage deployments**

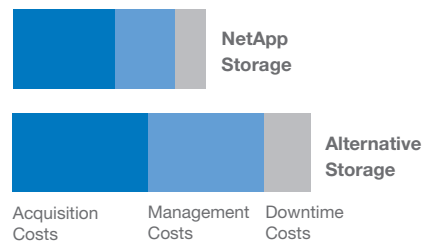
- Offers the highest internal drive count and advanced I/O connectivity (10GbE, FCoE, additional FC/GbE ports)
- Easily scalable and able to handle multiple workloads and Windows applications
- Offered in easy-to-order, preconfigured systems that include high-capacity drives
- \* FAS2000 Software Packs provide a simple way to add licenses for powerful data management software. For details, see the FAS2000 Software Packs Datasheet.

\*\* See the System Manager Datasheet for details.

FAS2000 SERIES OVERVIEW	FAS2020	FAS2040	FAS2050
<b>Form factor</b>	2U/12 Drive	2U/12 Drive	4U/20 Drive
<b>Dual controllers</b>	Yes	Yes	Yes
<b>Maximum raw capacity</b>	68TB	136TB	104TB
<b>Maximum disk drives</b>	68	136	104
<b>Maximum Ethernet ports</b>	4	8	8*
<b>Maximum Fibre Channel ports</b>	4	4	8*
<b>Onboard SAS port</b>	No	2	4*
<b>10Gbe support</b>	No	No	Yes*
<b>FCoE support</b>	No	No	Yes*
<b>Multipath Expansion</b>	No	No	Yes*
<b>Remote management</b>	Yes	Yes	Yes
<b>Storage protocols</b>	FCP, iSCSI, NFS, CIFS	FCP, iSCSI, NFS, CIFS	FCP, iSCSI, NFS, CIFS

All specifications are for dual-controller, active-active configurations

\* Combines integrated ports with I/O expansion cards



**Figure 3) Proven lower TCO.**

Studies by Oliver Wyman show that your total cost of ownership for NetApp storage systems is substantially lower than the cost of storage from other major vendors. Read the full reports at [www.netapp.com/tco](http://www.netapp.com/tco).



**Autodesk GOLD Partner**  
**Autodesk Training Center**  
**Autodesk Consulting Services Partner**  
**Autodesk Developer Network Member**

**Autodesk®**

Gold Partner

Architecture, Engineering & Construction  
Manufacturing

**Autodesk®**

Authorized Training Center  
Consulting Services Partner  
Authorized Developer

**HP Preferred Partner 2010 GOLD**  
**HP Service Delivery Partner**

2010 Preferred Partner  
**GOLD**



**Microsoft GOLD Certified Partner**

**Microsoft®**  
**GOLD CERTIFIED**

Partner

**Další autorizace a partnerství:**

IBM Advanced Business Partner, Symantec Enterprise Solutions Partner, Citrix SILVER Solution Advisor, VMware Enterprise Partner, Xerox Autorizovaný partner, 3Com Silver Partner

**České Budějovice 370 01**  
Tylova 17  
tel. +420 386 352 966 (...969)  
fax. +420 386 352 979  
[info@xanadu.cz](mailto:info@xanadu.cz)

**Praha 10 106 00**  
Žirovnická 2389  
tel. +420 283 891 154  
fax. +420 283 893 154  
[info@xanadu.cz](mailto:info@xanadu.cz)

**Brno 602 00**  
Sportovní 2a/558  
tel. +420 541 212 077  
fax. +420 541 212 621  
[info@xanadu.cz](mailto:info@xanadu.cz)

**Pardubice 530 02**  
Štrossova 291  
tel. +420 466 611 773  
fax. +420 466 611 613  
[info@xanadu.cz](mailto:info@xanadu.cz)

**Ostrava M.Hory 709 00**  
Fráni Šrámka 5  
tel. +420 596 611 060  
fax. +420 596 611 061  
[info@xanadu.cz](mailto:info@xanadu.cz)

[info@xanadu.cz](mailto:info@xanadu.cz)

[www.xanadu.cz](http://www.xanadu.cz)

[blog.xanadu.cz](http://blog.xanadu.cz)

[www.xanadu.cz/shop](http://www.xanadu.cz/shop)

[www.cadforum.cz](http://www.cadforum.cz)  
[www.hpdesignjet.cz](http://www.hpdesignjet.cz)  
[www.iproject.cz](http://www.iproject.cz)