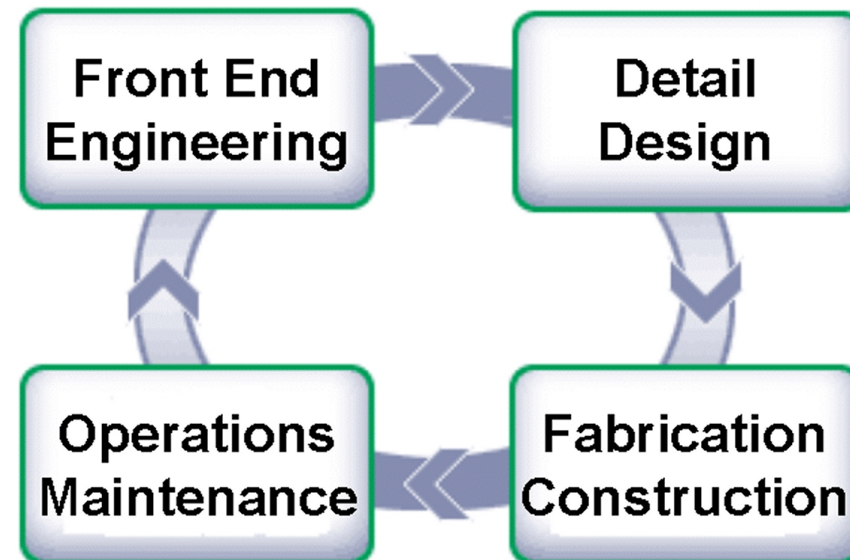


ISOGEN

AUTOMATIC PIPING ISOMETRICS FROM DESIGN SYSTEMS

ISOGEN is the industry de-facto standard for the automatic production of piping isometrics and is supplied by all major plant design software vendors. Having an established track record, **ISOGEN** saves time and money on design projects through its flexibility, outstanding features and comprehensive customisation options. **ISOGEN** is now available with I-Configure wizards to enable easy customisation.

- Industry global de facto standard
- Supplied by all major Plant Design vendors
- Millions of spools completed
- Automatic production of schedules
- Materials, pipe cut lengths, welds supports etc.
- Adaptable to company standards



ISOGEN for automated isometric drawing production

ISOGEN eliminates the requirement to manually edit drawings and reduces fabrication and on-site construction errors. Consistent drawing content is provided through isometric repeatability and **ISOGEN** can be fully customised to meet company standards and working practices.

ISOGEN is now provided with the I-Configure wizard to enable easy customisation and configuration of the isometric drawing output. Choose from a range of options to obtain the results you require.

ISOGEN generates Bills of Materials, handles Metric and/or Imperial dimensions, and accommodates in-house terminology as well as foreign language text.

ISOGEN's unique system logic produces isometrics that are clearly laid out and annotated in accordance with current day industry practice.

ISOGEN offers a number of options to suppress or modify the representation of information, including control of:

- Co-ordinates
- Spool piece identifiers
- Pipe support identification
- Instrument identification
- Component tagging
- Flow arrows on components
- Insulation identification
- Tracing identification
- Flange rotation angles

Special features:

ISOGEN's strong track record as a practical engineering tool is apparent from the range of

special features offered as part of the standard system:

OUTPUTS AND REPORTS

- Bill of Materials
- Bending Reports
- Weld Reports
- Support Summaries
- Insulation length calculation
- Pipeline surface area calculation
- Weights and centre of gravity calculations

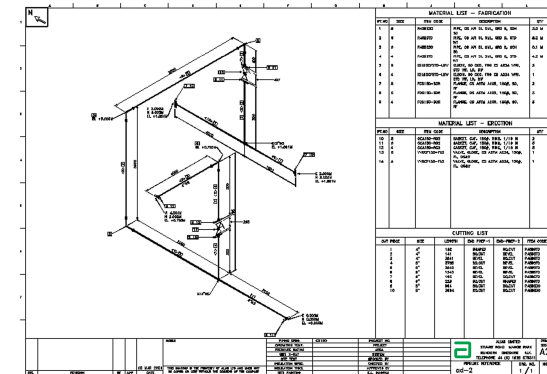
CUSTOMISATION

- Alternative Text – in-house terminology can be included as headings or messages, with support for foreign languages
- Text Positioning - standard information and symbols can be placed at user-defined locations
- Isometric Repeatability - ensures the same number of drawings, basic content and spool and weld numbers following pipe design changes
- Grouping of messages on individual components
- Item Code description / substitution
- User defined fittings / symbols
- Choice of 2D and 3D skew representation

DRAWING OPTIONS

- Reference Dimensions to nearby objects external to the pipeline, such as steelwork and equipment
- Insulation / tracing / fluid flow on pipe and fittings
- Pipe centreline or BOP elevations
- Continuation / Nozzle connection points shown by dotted pipeline indication

- Additional Materials - user can add-in materials to the BOM
- User defined spool prefixing and numbering
- Support for hygienic pipe work fittings
- Detail sketches
- Tapping points on fittings
- Unique part numbers
- Location points and penetrations
- Reinforcement pads on fabricated tees and crosses



ISOGEN is highly configurable and is supplied with most of the worlds' leading plant design systems and is the most automated engine available for drawing production.

ISOGEN - the complete solution for piping isometrics.

Contact Alias Limited for more information: -

<http://www.alias.ltd.uk>