

ENSCAPE™

**ENSCAPE™ FOR REVIT® – PRODUCT INTRODUCTION**



“ Since starting Enscape we continuously follow one goal:  
Enable everyone to experience architectural projects as if they were  
already built, by developing a photorealistic and easy to use 3D  
walkthrough with one click.”

---

Thomas Schander | CEO

1 Introduction to Enscape

2 Using Enscape

3 Examples & Testimonials

4 Prices

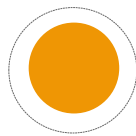
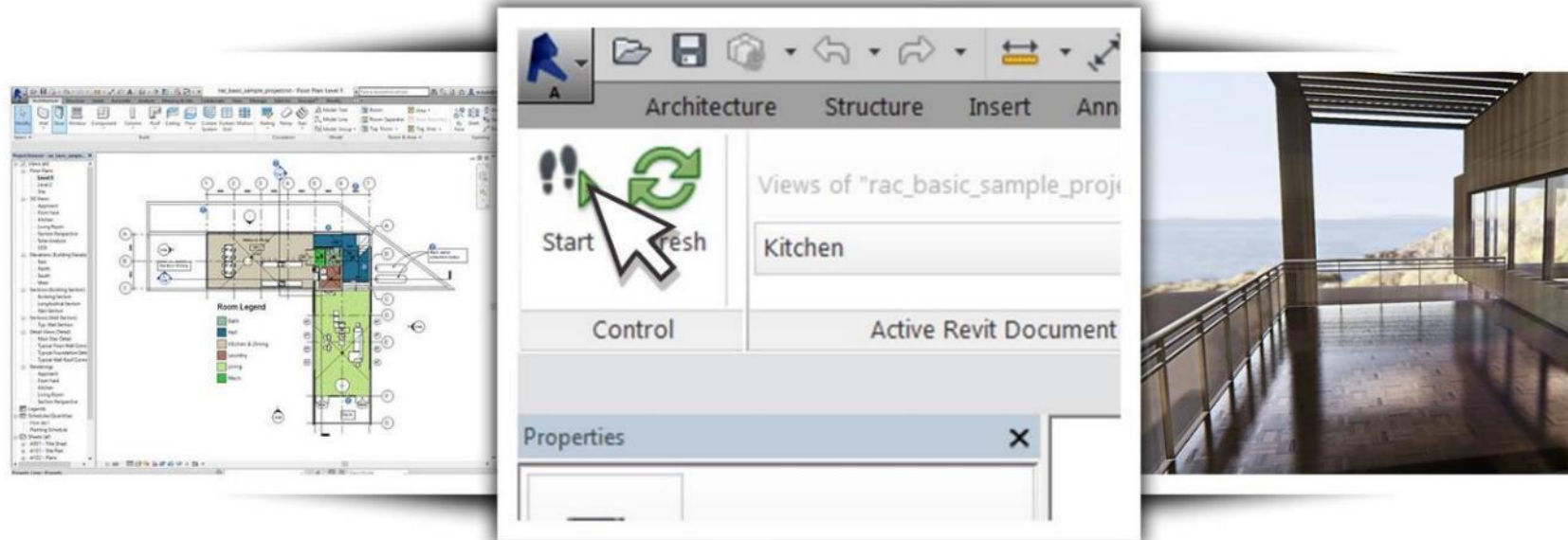
5 Additional Features



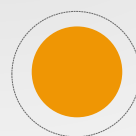
WHAT IS  
ENSCAPE™



# WHAT IS ENSCAPE™



3D visualization plug-in for Revit®.



Renderings and walkthroughs with one click.



# BENEFIT DURING THE WHOLE PROJECT



## Project start



## Internal presentation

- Use Enscape™ to present your project
- Create a standalone export of your project for your manager
- Use Papermodel™ mode in an early phase



## Project adjustment

- Send a screenshot internally to find problems
- Send a quick screenshot to your client
- Send a standalone walkthrough of the project



## Customer presentation

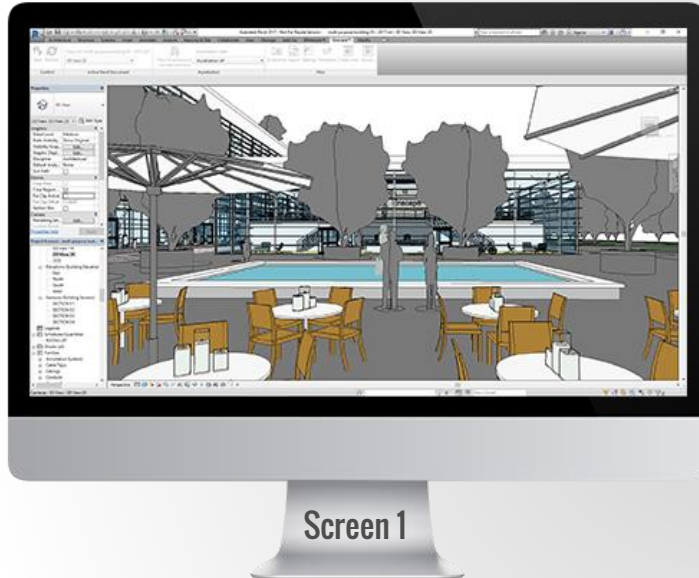
- Last minute changes
- Prepare a standalone walkthrough of the project
- Incorporate customer feedback right away
- VR experience



USING  
ENSCAPE™



# WHY SHOULD YOU USE ENSCAPE™?



No blocking of resources



Quick iterations



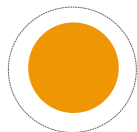
No outsourcing



Only one model



# IMPROVE YOUR WORKFLOW



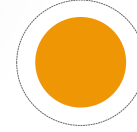
**Effortless and fast renderings**



**Realtime feedback**



**Impress clients**



**Efficient meetings**

# EFFORTLESS RENDERINGS



## FAST RENDERING

No long waiting times until your 3D visualization is finished.



## NO TRAINING

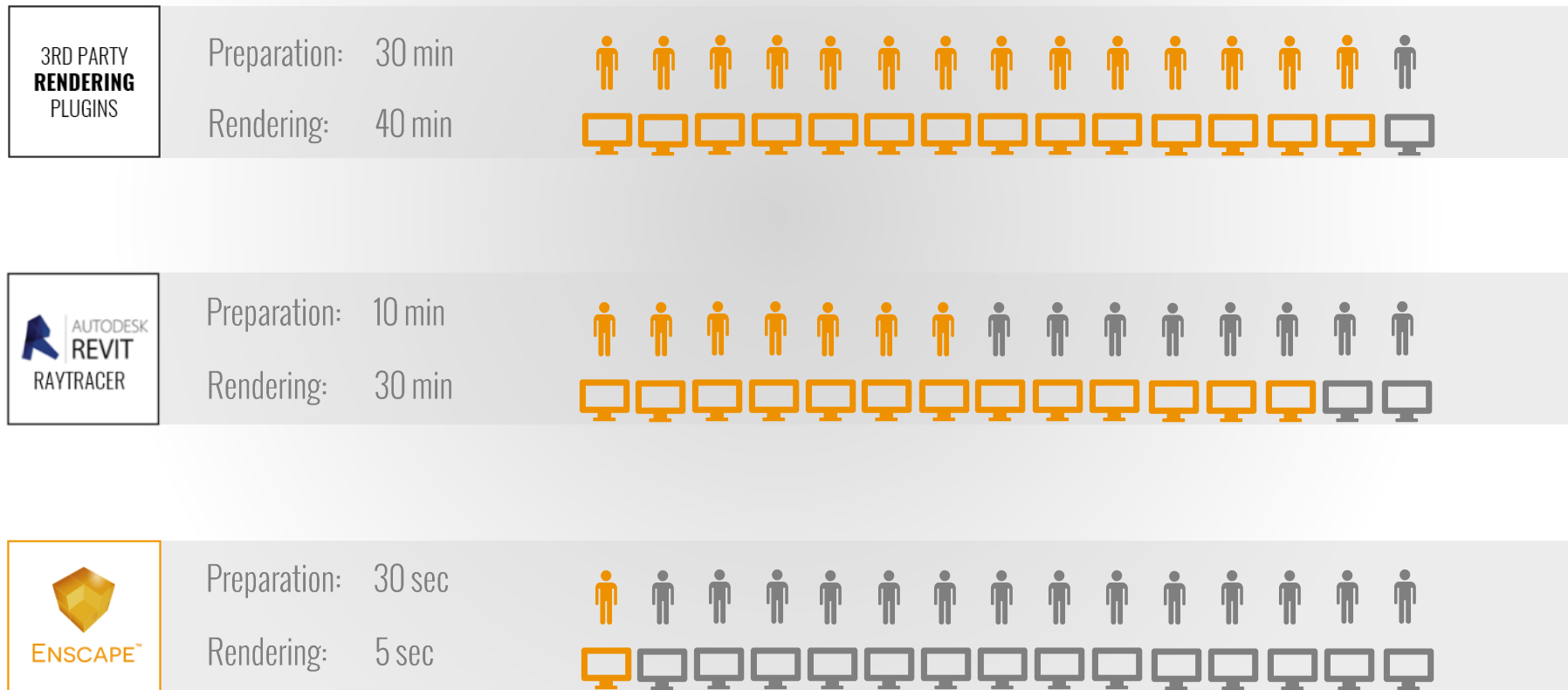
No training for staff necessary due to the easy user interface of Enscape™.



## NO CLOUD

No uploading to the cloud is necessary.

# SAVE TIME WITH ENSCAPE™





# IMPRESS CLIENTS WITH ACCESSIBLE VR

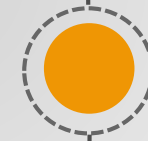


- Enable Oculus Rift in Enscape™
- Customers can virtually walk through their projects
- VR in seconds instead of hours

# EFFICIENT MEETINGS



Easy presentation preparation



On the fly changes



Interactive presentation due to realtime feedback

# TOP SIX REASONS FOR ENSCAPE™

Ease of use due to Revit plug-in 01

Easy presentation preparation 02

Fast rendering 03

04 No uploading to the cloud

05 Realtime feedback

06 Virtual Reality







TESTIMONIALS  
& EXAMPLES



# CLIENT STATEMENTS



## Foster & Partner

“We have been using Enscape as both a design presentation and decision making tool. It seamlessly integrates into our BIM process with minimal training. Enscape’s immediate feedback to design changes of geometry, material finishes, lighting and acoustics directly from the BIM model is a significant benefit.”

### Stephen Holmes

Practice BIM, Manager & Partner  
Foster & Partner



## Kohn Pederson Fox (KPF)

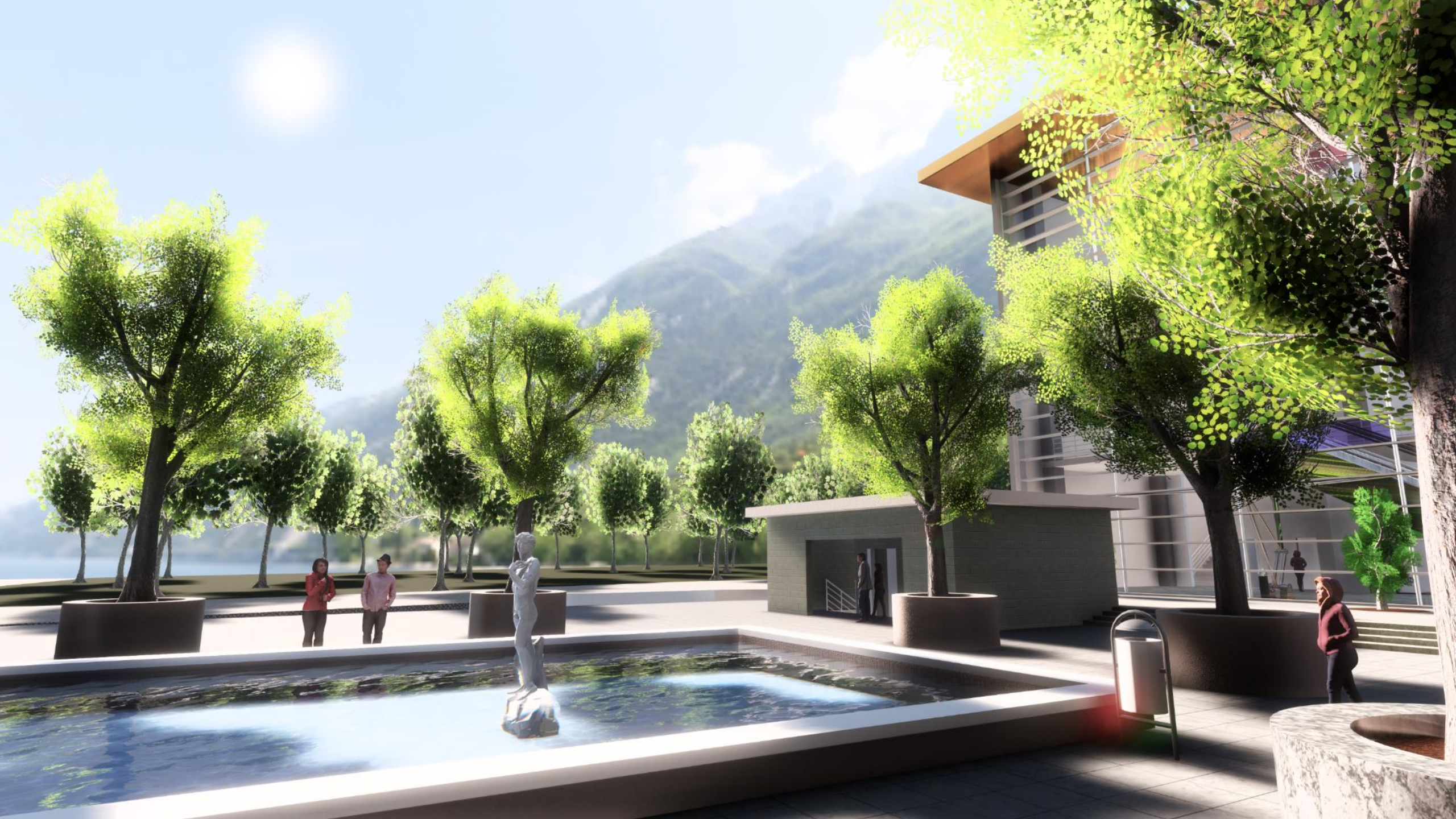
“We were immediately impressed with how little time and effort is required to produce real-time design reviews and high-quality renderings. What used to take days now takes minutes. We’re rolling out Enscape to all our global offices.”

### Ian Siegel

BIM Practice Specialist  
Kohn Pederson Fox (KPF)























PRICES





# OFFERED LISENCE PACKAGES

	FIXED-SEAT LICENSE	FLOATING LICENSE <small>FEATURED</small>	FIXED-SEAT LICENSE
	\$ <b>449</b> yearly	\$ <b>679</b> yearly	\$ <b>45</b> monthly
Realtime Revit connection	✓	✓	✓
3D walkthrough and flythrough	✓	✓	✓
Global illumination rendering	✓	✓	✓
Acoustics and sound simulation	✓	✓	✓
PaperMode™	✓	✓	✓
Use on multiple machines*	✗	✓	✗





ADDITIONAL  
FEATURES





# PAPERMODE™



- Present your project in an early project phase
- Shift the focus of your audience on rooms and space without material details
- All colors are set to white



# STANDALONE EXPORT

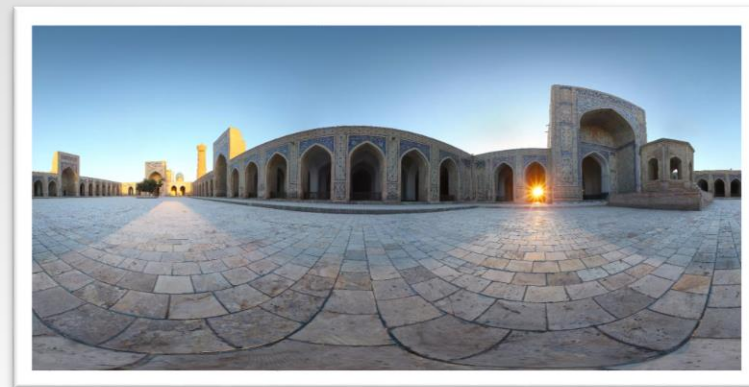


- Create a standalone export of your project
- Share your project with clients or colleagues
- Walk through your project without Revit or Enscape installed
- Skip Revit's loading time

# LOAD A SKY BOX



- Load a sky box from a file
- Use high dynamic range panoramas or simple image files
- Create a more realistic setting of your project



# IMAGE ADJUSTMENTS

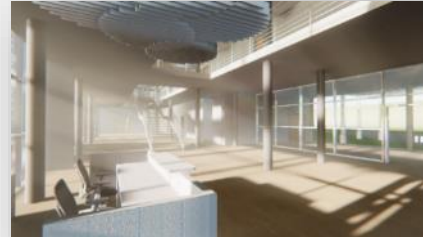
Enscape™ offers you a vast number of possibilities to adjust your image with ease

---



## DEPTH OF FIELD

Simulates the focal point of a real camera



## VOLUMETRIC FOG

Gives the scene a depth, by making the light rays visible



## CLOUD DENSITY

Adjust the desired amount of cumulus and cirrus clouds



## BLOOM & LENS FLARE

Bright areas bloom over the surrounding colors



# SOCIAL MEDIA & CONTACT INFO



Enscape3D



@Enscape3d



Enscape 3D

Erbprinzenstraße 27  
76133 Karlsruhe  
Germany

+49 721.170.293.010

info@enscape3d.com

enscape3d.com





THANK YOU